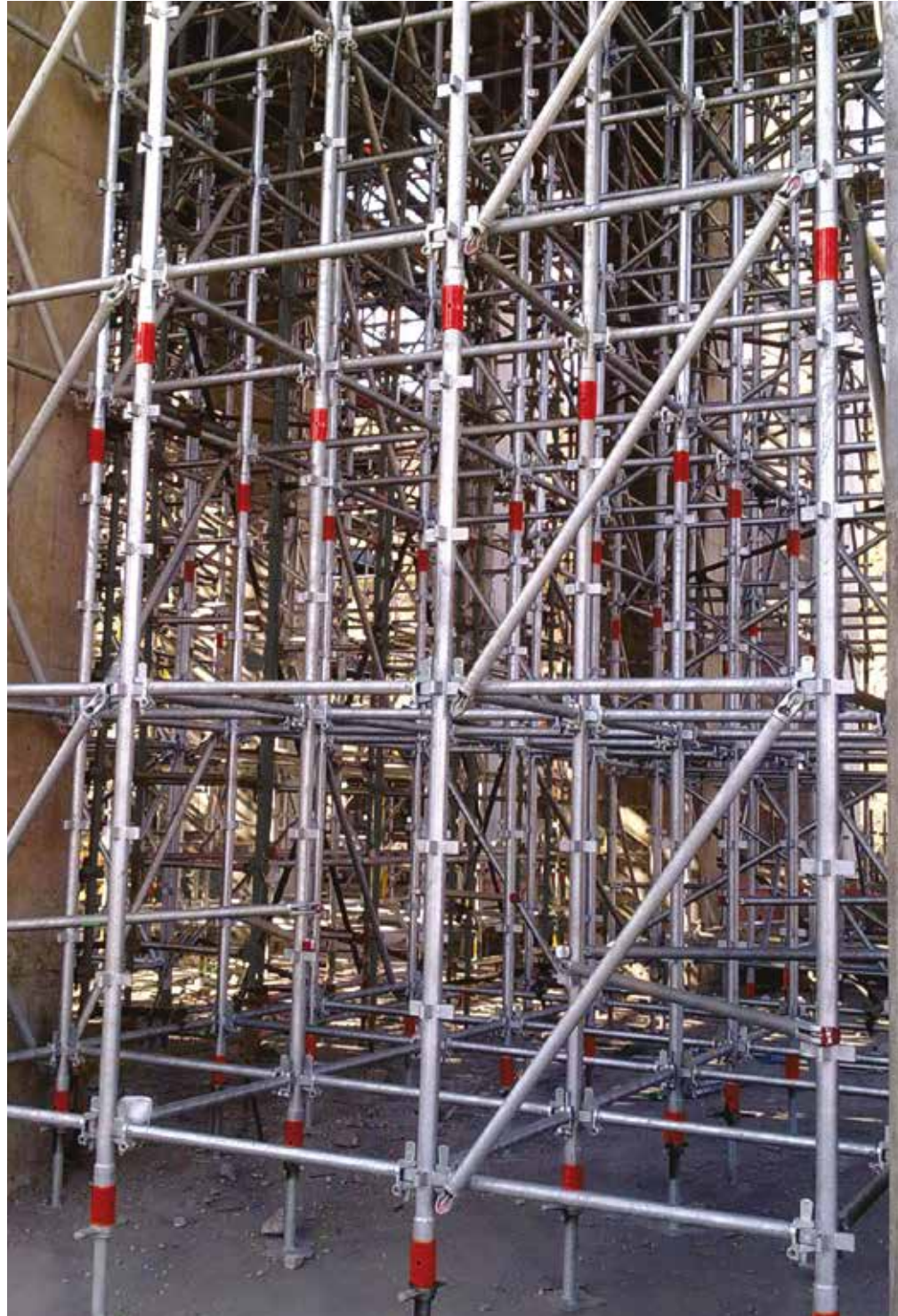


Product Catalogue
Support Work

super-stage



 form-scaff

Formwork & Scaffolding
Solutions

We are
WACO



Form-Scaff is South Africa's leading supplier of formwork, falsework and scaffolding to the construction and civil engineering industries. Form-Scaff not only manufactures, hires and sells world-class products, but also provides the design skills, technical advice and support that comes with having 50 years experience and more than 30 branches locally and internationally.

We are Waco International

Form-Scaff is part of Waco International, a focused equipment rental and industrial services business with operations in Africa (South Africa and other sub-Saharan African countries), Australasia (Australia and New Zealand) and the United Kingdom.

The Group provides services in the areas of formwork, shoring and scaffolding, insulation, painting and blasting, hydraulics and suspended access platforms, relocatable modular buildings, portable sanitation products and integrated hygiene services.

Disclaimer:

Copyright in this catalogue vests in Form-Scaff, a division of Waco Africa (Proprietary) Limited ("Form-Scaff") and extends inter alia, to the making of copies in whole or in part without the prior written consent of Form-Scaff.

While every effort has been made to ensure the accuracy of the information in this catalogue, we cannot accept responsibility for any errors which may occur as a result of reliance on the contents of this catalogue and are not liable for any loss of any nature that may be incurred as a result of such reliance. Details of any of the products may change without prior notice.

The customer must ensure that 'good practice' is adopted on site by competent persons and that the products shown in this catalogue are erected, used and stripped in accordance with the relevant Codes of Practice and the OHS Act and Regulations 85 of 1993. This catalogue does not contain any design detail but lists and depicts the items available under this product range. The responsibility for design is the responsibility of the customer.

Note: The colours used in this document are for illustrative purposes only and may differ on actual products

Contents



super-stage

Page 2 Super-Stage Overview

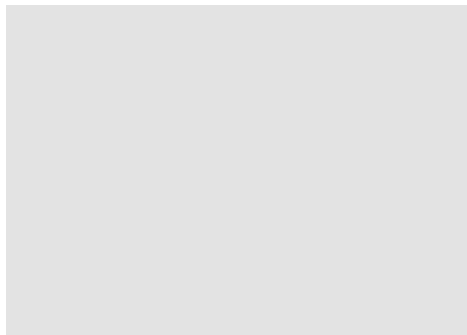
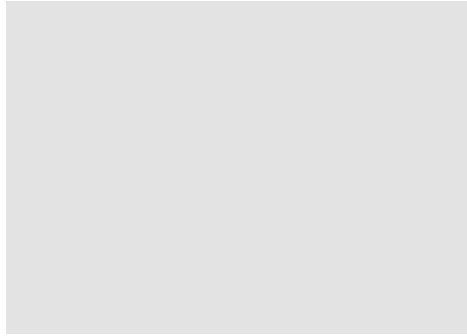
Page 3 General Assembly

Page 4 Standards & Ledgers

Page 5 Braces

Contact Details

Page 9 Head Office & Branches





super-stage



Super-Stage Supportwork

Super-Stage is Form-Scaff's heavy duty 80kN Shoring system. The system is based on the ever popular Kwik-Stage design, but uses a 60mm diameter Standard, a different type of Ledger and modular Bracing specifically designed to enable the high 80kN leg loads. Fitting both the Diagonal and Plan Braces is very quick and easy due to click-in / snap-on features and ensures a 100% plumb and square shoring system. Super-Stage shares the uniquely designed Ledgers and Diagonal Braces with Form-Scaff's new Super-Scaff scaffolding system.

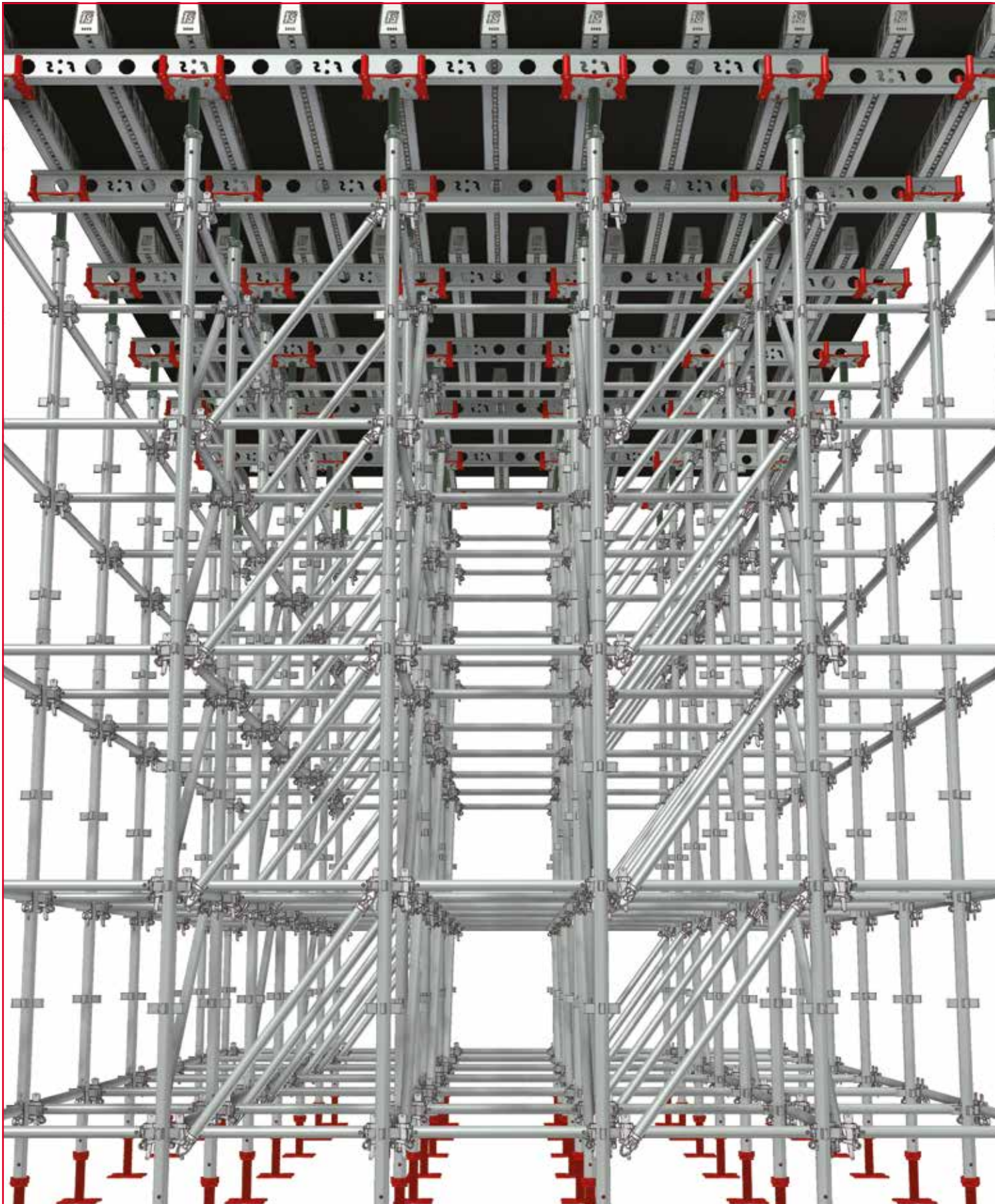
System Features

- 80kN system.
- Quick and easy to assemble and disassemble.
- The clip-on bracing speeds up the erection and stripping time.
- Ledgers and Diagonal Braces are interchangeable with the Super-Scaff system.
- Modular design ensures ease of erection.
- Versatile height and width configurations.
- Conforms to all South African standards and regulations.



super-stage

General Assembly



Standards & Ledgers

Super-Stage BT Jacks

Super-Stage BT Jacks are inserted into the ends of the Super-Stage Standards to provide vertical height adjustment. Numerous hole positions in the Base Plate of the Jack facilitates the fixture of different main bearers directly onto the Jack using lindapter connections. The Super-Stage Fork-Head also fits onto the base plate.

CODE	DESCRIPTION	MASS(kg)
1315050	SUPER-STAGE BT JACK 610 R/O	16.8



Super-Stage Standards

The 60mm diameter Super-Stage Standards make-up the vertical support for the formwork or bearers. Sockets welded to the end of each Standard contributes enormously to the speed and safety of the system as it requires no loose fitting connector.

CODE	DESCRIPTION	MASS(kg)
1310006	SUPER-STAGE STANDARD 3000	23.4
1310005	SUPER-STAGE STANDARD 2500	19.7
1310004	SUPER-STAGE STANDARD 2000	16.0
1310003	SUPER-STAGE STANDARD 1500	12.3
1310002	SUPER-STAGE STANDARD 1000	8.6
1310001	SUPER-STAGE STANDARD 500	4.9



Super-Ledgers

Super-Ledgers are horizontal members used to keep the Super-Stage Standards in a vertical position. The hole in the Ledger's end fitting provides a connection point for the Super-Diagonal Brace. Super-Ledgers can also be used on Super-Scaff and Kwik-Stage.

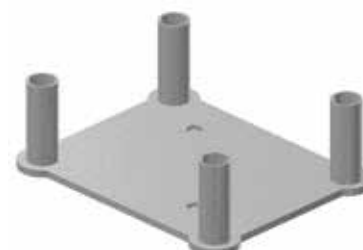
CODE	DESCRIPTION	MASS(kg)
1310021	SUPER-LEDGER 2500	9.2
1310022	SUPER-LEDGER 2000	7.7
1310023	SUPER-LEDGER 1500	6.1
1310025	SUPER-LEDGER 1219	5.2
1310029	SUPER-LEDGER 900	4.2



Super-Stage Fork-Head

The Super-Stage Fork-Head seats on top of the BT Jack and is secured in place with two R-Clips. The Fork-Head allows a variety of main bearer sizes to be used.

CODE	DESCRIPTION	MASS(kg)
1315051	SUPER-STAGE FORK-HEAD	5.4



Super-Diagonal Braces

The Super-Diagonal Braces simply click into the hole in the Super-Ledger end-fitting and can therefore also be used on Super-Scaff.

CODE	DESCRIPTION	MASS(kg)
1310040	SUPER-DIAGONAL BRACE 2500 X 1500	10.2
1310041	SUPER-DIAGONAL BRACE 2000 X 1500	9.0
1310043	SUPER-DIAGONAL BRACE 1500 X 1500	7.9
1310044	SUPER-DIAGONAL BRACE 1219 X 1500	7.3
1310045	SUPER-DIAGONAL BRACE 900 X 1500	6.8
1310054	SUPER-DIAGONAL BRACE 2500 X 1000	9.5
1310055	SUPER-DIAGONAL BRACE 2000 X 1000	8.1
1310049	SUPER-DIAGONAL BRACE 1500 X 1000	6.8
1310050	SUPER-DIAGONAL BRACE 1219 X 1000	6.1
1310051	SUPER-DIAGONAL BRACE 900 X 1000	5.5

* The first dimension refers to the horizontal length of the bay and the second to the vertical height.



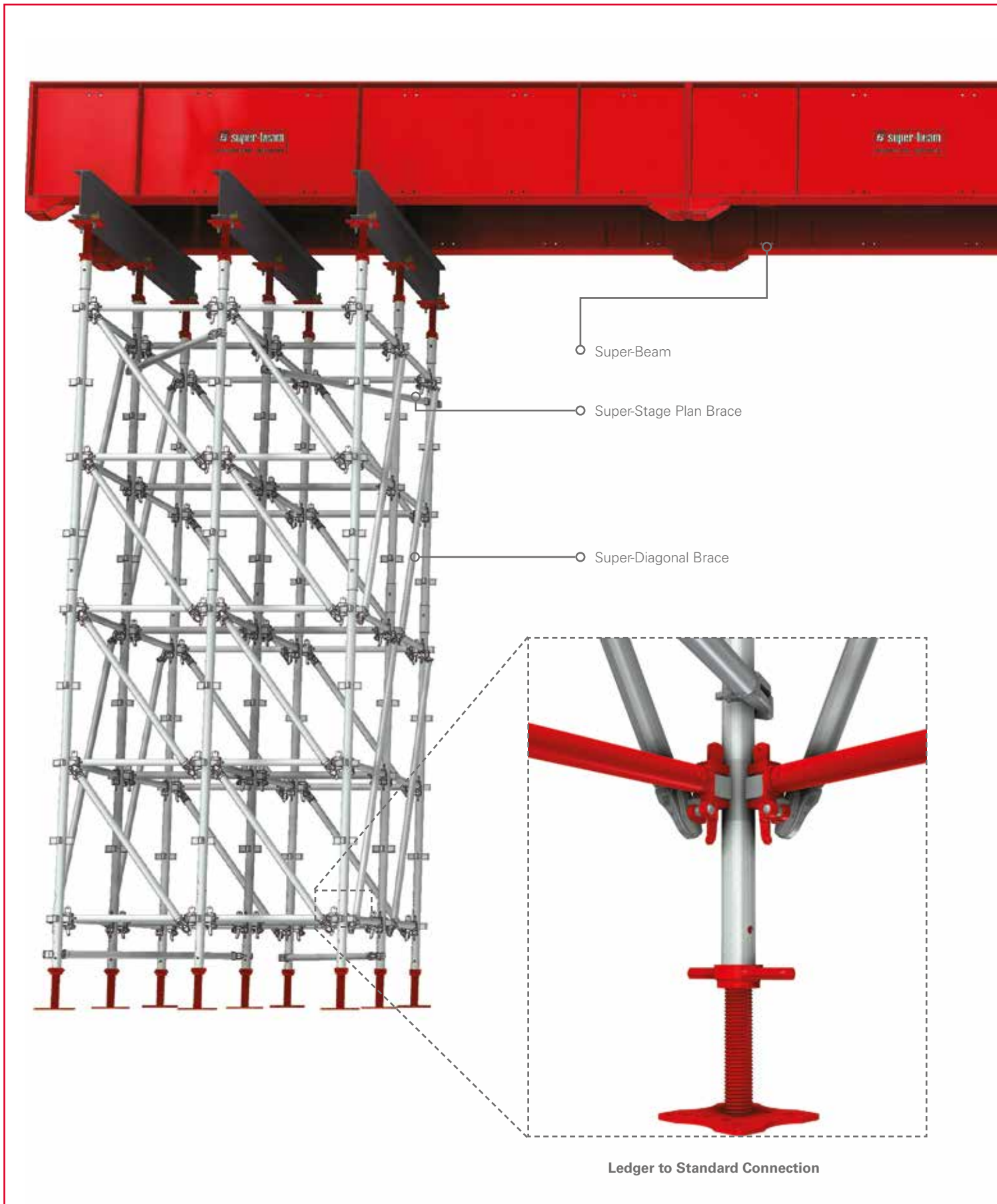
Super-Stage Plan Braces

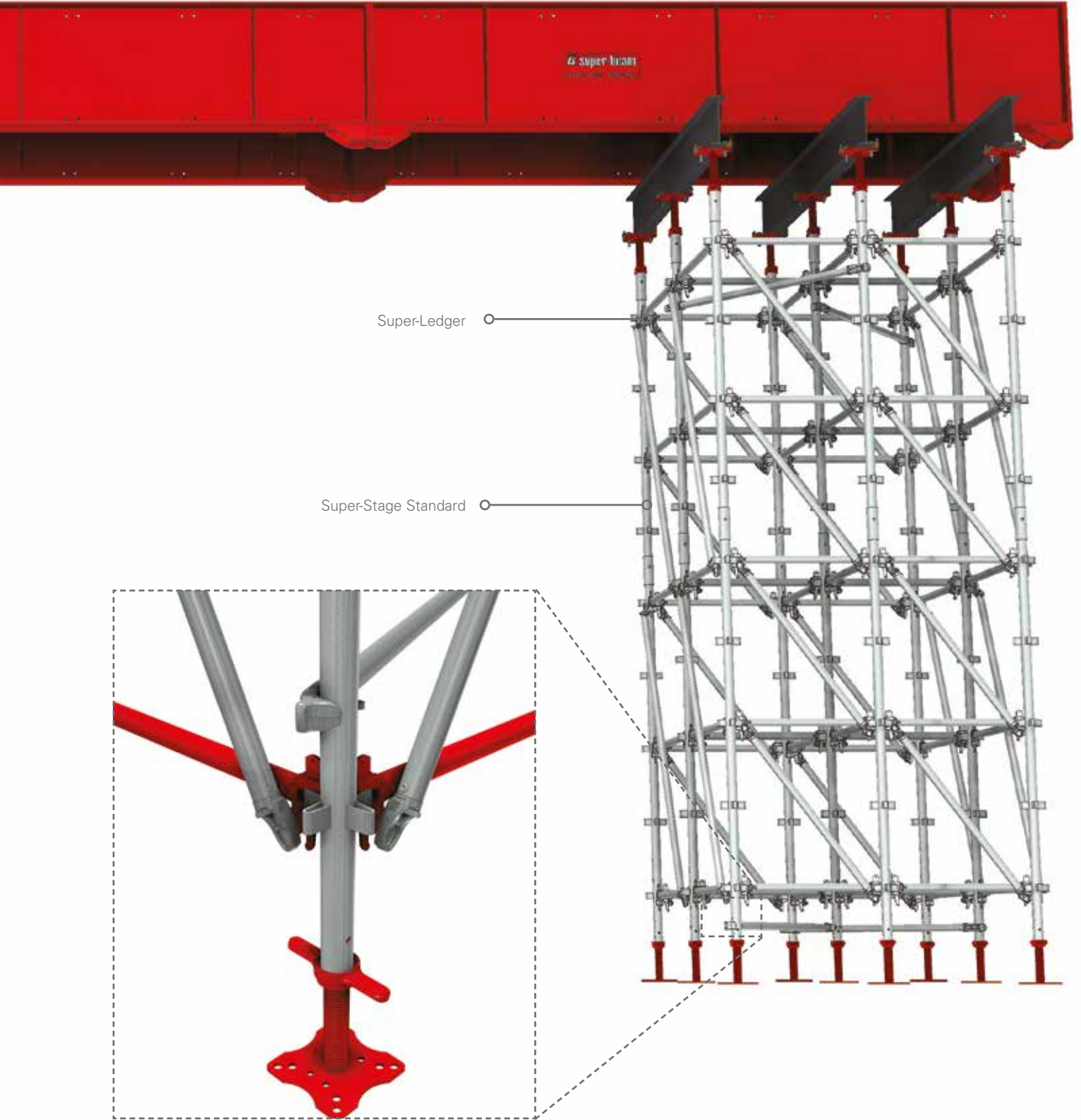
The Super-Stage Plan Brace ensures 100% square bay sizes. It is placed into position by simply clipping it onto the Super-Stage Standard at the relevant height.

CODE	DESCRIPTION	MASS(kg)
1310070	SUPER-STAGE PLAN BRACE 2512 X 2512	15.0
1310071	SUPER-STAGE PLAN BRACE 2512 X 2012	13.9
1310072	SUPER-STAGE PLAN BRACE 2512 X 1512	13.0
1310073	SUPER-STAGE PLAN BRACE 2512 X 1231	12.6
1310074	SUPER-STAGE PLAN BRACE 2512 X 912	12.2
1310075	SUPER-STAGE PLAN BRACE 2012 X 2012	12.7
1310076	SUPER-STAGE PLAN BRACE 2012 X 1512	11.7
1310077	SUPER-STAGE PLAN BRACE 2012 X 1231	11.2
1310078	SUPER-STAGE PLAN BRACE 2012 X 912	10.8
1310079	SUPER-STAGE PLAN BRACE 1512 X 1512	10.5
1310080	SUPER-STAGE PLAN BRACE 1512 X 1231	10.0
1310081	SUPER-STAGE PLAN BRACE 1512 X 912	9.4
1310082	SUPER-STAGE PLAN BRACE 1231 X 1231	9.3
1310083	SUPER-STAGE PLAN BRACE 1231 X 912	8.7
1310084	SUPER-STAGE PLAN BRACE 912 X 912	7.9



Application - Super-Beams on Super-Stage





Super-Ledger ○

Super-Stage Standard ○

Bracing Connection

Application - Multi-Form on Super-Stage



International Branches

Ghana - Accra

Plot 29, Off Spintex Road, Tema
Motorway Industrial Area,
Accra, Ghana
Tel +233 30397 3722 /
+233 20868 1651

Kenya - Nairobi

Plot 15081/5/27 Old Airport North
Road, Nairobi, Kenya
Tel +254 724 004 781 /
+254 718 220 412

Mauritius - Port Louis

Anse Courtois Street, Montebello,
Pailles, Mauritius
Tel +230 286 6175 /
+230 5940 2551

Mozambique - Palma

N'Cumbi Road No. R762,
Palma, Mozambique
Tel +258 86 109 6443 /
+258 84 774 3788

Mozambique - Pemba

Estrada Nacional EN106, Muxara,
Pemba, Cabo Delgado, Mozambique
Tel: +258 84 312 4146

Namibia - Swakopmund

608 Nelson Mandela Avenue,
Swakopmund, Namibia
Tel +264 64 46 3677 /
+264 64 46 2720

Namibia - Windhoek

Cnr Nickle & Michelle McClean Street,
Prosperita, Windhoek, Namibia
Tel +264 61 425 350 /
+264 081 164 9806

Swaziland - Matsapha

Lot 814, King Mswati III Ave,
Matsapha, Swaziland
Tel +268 25 18 8360 /
+268 7668 5337

Tanzania - Dar es Salaam

Cnr Mwaikibaki Road & Kilimani
Close, Plot 1034/5 Mbezi Kawe,
Dar es Salaam, Tanzania
Tel +255 75 638 8115 /
+255 74 299 8022

Zambia - Kitwe

Plot 16, Karibu Business Park,
Kitwe, Zambia
Tel +260 966 880009 /
+ 260966 923 854

Zambia - Lusaka

Plot 397 A/3/B Kufue Road,
Lusaka, Zambia
Tel +260 968 491061 /
+ 260966 923 854

South African Branches

Ballito

Labora Terra Industrial Park,
Shakas Rock Road, Umhlali,
Ballito, KwaZulu Natal
Tel +27 (0) 32 947 9430

Bloemfontein

26 Tibbie Visser Street, Estoire
Small Holdings District,
Bloemfontein, Free State
Tel +27 (0) 51 432 5555

Cape Town

8 Rondevallei Road, Hagley,
Kuilsvrivier, Western Cape
Tel +27 (0) 21 528 6500

Durban South

16 Stroude Place, Isipingo,
KwaZulu Natal
Tel +27 (0) 31 902 2677

East London

5 Ray Craib Crescent,
Beacon Bay, Eastern Cape
Tel +27 (0) 43 748 2558

Gauteng

Poplar Crescent, Lords View
Industrial Park, Klipfontein,
Chloorkop X66, Gauteng
Tel +27 (0) 10 601 6313

George

10 Ring Road, George Industrial,
George, Western Cape
Tel +27 (0) 44 695 0294

Kathu

33 Kalk Street, Industrial Area,
Kathu, Northern Cape
Tel +27 (0) 53 723 2194

Lephalale

Rietspruit Plot 23, Portion 46,
Witkop Road, Lephalale, Limpopo
Tel +27 (0) 14 763 7982

Margate

Industrial Road, Margate,
KwaZulu Natal
Tel +27 (0) 39 317 1708

Nelspruit

Erf 379, Rocky Drift,
Mpumalanga
Tel +27 (0) 13 758 1036

Newcastle

6 Schonland Street, Riverside
Industrial Area, Newcastle,
KwaZulu Natal
Tel +27 (0) 34 375 7697

Pietermaritzburg

Market Road Ext, Mkondeni,
Pietermaritzburg, KwaZulu Natal
Tel +27 (0) 33 346 1767

Polokwane

62 Goud Street, Laboria,
Polokwane, Limpopo
Tel +27 (0) 15 293 0450

Port Elizabeth

4 Kendle Street, Neave Industrial
Area, Eastern Cape
Tel +27 (0) 41 453 2317

Richards Bay

111 Alluminia Alley, Alton Industrial
North, KwaZulu Natal
Tel +27 (0) 35 751 1140

Rustenburg

3 Ferro Street, Rustenburg,
North West Province
Tel +27 (0) 14 538 2540

Vereeniging

Cnr Telford & Van Riebeeck Street,
Duncanville, Gauteng
Tel +27 (0) 16 455 1611

Witbank

TP66 Geodesic Crescent, Marelden
Ext 3, Techno Park, Witbank,
Mpumalanga
Tel +27 (0) 13 690 2833

Head Office

181 Barbara Road,
Elandsfontein, Gauteng
PO Box 669, Isando, 1660
Tel +27 (0) 11 842 4000

super-stage

Waco Africa / Head Office: PO Box 669, Isando, 1600.
181 Barbara Road, Elandsfontein. Tel: 011 842 4000