

Product Catalogue
Horizontal Formwork

coffers & troughs



 **form-scaff**

Formwork & Scaffolding
Solutions

We are
WACO



Form-Scaff is South Africa's leading supplier of formwork, falsework and scaffolding to the construction and civil engineering industries. Form-Scaff not only manufactures, hires and sells world-class products, but also provides the design skills, technical advice and support that comes with having 50 years experience and more than 30 branches locally and internationally.

We are Waco International

Form-Scaff is part of Waco International, a focused equipment rental and industrial services business with operations in Africa (South Africa and other sub-Saharan African countries), Australasia (Australia and New Zealand) and the United Kingdom.

The Group provides services in the areas of formwork, shoring and scaffolding, insulation, painting and blasting, hydraulics and suspended access platforms, relocatable modular buildings, portable sanitation products and integrated hygiene services.

Disclaimer:

Copyright in this catalogue vests in Form-Scaff, a division of Waco Africa (Proprietary) Limited ("Form-Scaff") and extends inter alia, to the making of copies in whole or in part without the prior written consent of Form-Scaff.

While every effort has been made to ensure the accuracy of the information in this catalogue, we cannot accept responsibility for any errors which may occur as a result of reliance on the contents of this catalogue and are not liable for any loss of any nature that may be incurred as a result of such reliance. Details of any of the products may change without prior notice.

The customer must ensure that 'good practice' is adopted on site by competent persons and that the products shown in this catalogue are erected, used and stripped in accordance with the relevant Codes of Practice and the OHS Act and Regulations 85 of 1993. This catalogue does not contain any design detail but lists and depicts the items available under this product range. The responsibility for design is the responsibility of the customer.

Note: The colours used in this document are for illustrative purposes only and may differ on actual products

Contents

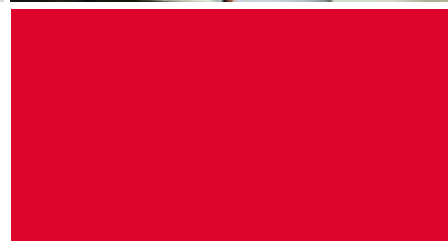
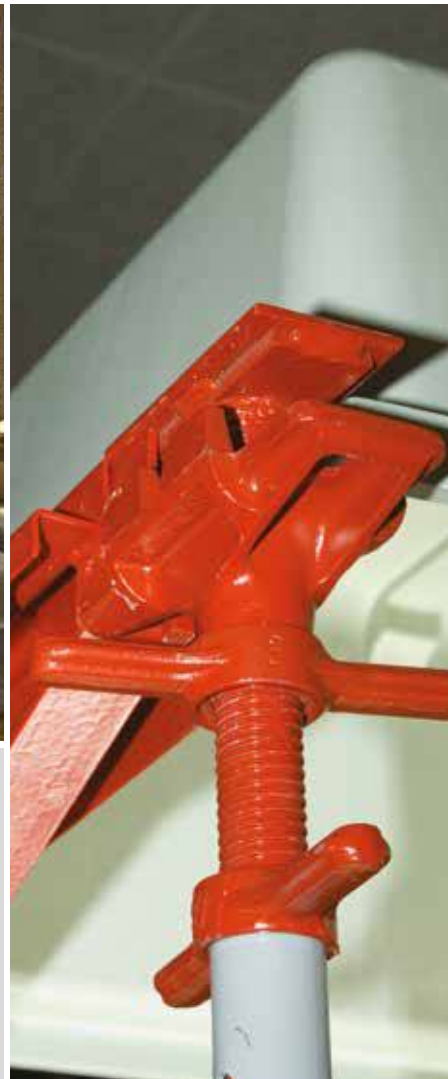
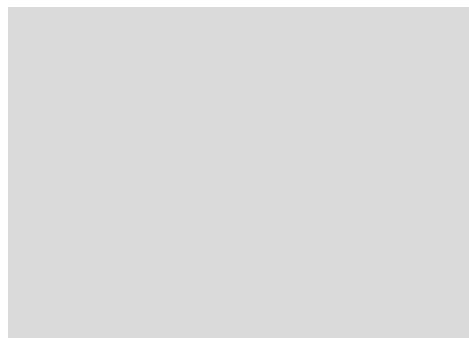
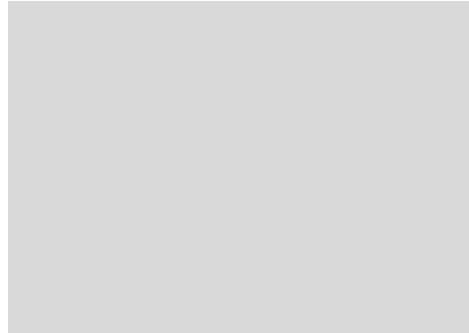


coffers & troughs

- Page 2** Coffers & Troughs Overview
- Page 3** General Assembly
- Page 4** Supportwork - Kwik-Stage
- Page 5** Kwik-Strip Components
- Page 6** Coffers & Troughs
- Page 10** Supportwork Props
- Page 11** Trusses & Tri-Pods
- Page 12** Kwik-Deck Components

Contact Details

- Page 17** Head Office & Branches





Coffers & Troughs

Form-Scaff's Coffer system is used to produce concrete slabs with a waffled soffit finish. The ribs between the Coffers are reinforced and act as down stand concrete beams to produce a two way spanning concrete slab.

Form-Scaff's Trough system is used to produce a one way spanning concrete slab with a multiple inverted gutter shaped soffit finish. The ribs between the Troughs are reinforced to act as down stand concrete beams.

Coffers can be supported on both the Kwik-Strip and Kwik-Deck systems. Troughs can only be supported on the Kwik-Strip System.

Please Note: When Coffers are supported on the Kwik-Deck System, the Grid increases from the standard 900 x 900 module to a 900 x 925 module due to the 100mm wide Kwik-Deck Beams.

* For any design or technical information, please refer to the Form-Scaff Coffers & Troughs design manual.

System Features

- Quick and easy to install and remove.
- Lightweight and easy to handle.
- Regular shape ensures ease of erection.
- Versatile height and width configurations.
- Stacking by "nesting" saves space on site and reduces transport costs.
- Reduction in concrete and reinforcing steel.
- Offers a fair faced concrete finish.



General Assembly



Supportwork - Kwik-Stage

Jacks and Base Plates

BT Jacks are inserted into the ends of Kwik-Stage Standards to provide the required vertical height adjustment and to secure the Kwik-Deck Drop-Heads in position.

Kwik-Stage Base Plates are inserted into bottom end of Kwik-Stage Standards to spread the load onto the bearing surface.

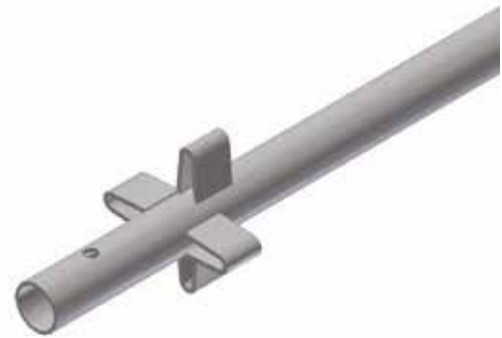
CODE	DESCRIPTION	MASS(kg)
0315302	KWIK-STAGE BT BASE PLATE	1.6
0140335	KWIK-STAGE 610 R/O BT BASE JACK	4.2



Kwik-Stage Standards

Kwik-Stage Standards make-up the vertical supports for bearers, formwork and access.

CODE	DESCRIPTION	MASS(kg)
1105005	KWIK-STAGE STANDARD 3000	15.5
1105004	KWIK-STAGE STANDARD 2500	12.9
1105003	KWIK-STAGE STANDARD 2000	10.3
1105002	KWIK-STAGE STANDARD 1500	7.7
1105001	KWIK-STAGE STANDARD 1000	5.2
1105000	KWIK-STAGE STANDARD 500	2.6
1105045	KWIK-STAGE STANDARD 250 C/W SOCKET	2.6



Kwik-Stage Ledgers

Kwik-Stage Ledgers are horizontal members used to keep the Kwik-Stage Standards in the vertical position.

CODE	DESCRIPTION	MASS(kg)
1105021	KWIK-STAGE LEDGER 2500	9.0
1105022	KWIK-STAGE LEDGER 2000	7.3
1105018	KWIK-STAGE LEDGER 1800	6.6
1105034	KWIK-STAGE LEDGER 1600	5.7
1105023	KWIK-STAGE LEDGER 1500	5.7
1105024	KWIK-STAGE LEDGER 1294	5.0
1105025	KWIK-STAGE LEDGER 1219	4.7
1105027	KWIK-STAGE LEDGER 1000	3.4
1105049	KWIK-STAGE LEDGER 925	3.2
1105029	KWIK-STAGE LEDGER 900	3.1
1105037	KWIK-STAGE LEDGER 700	2.6
1105032	KWIK-STAGE LEDGER 600	2.4



Connectors

Kwik-Stage Connectors are used to locate Standards on top of each other.

CODE	DESCRIPTION	MASS(kg)
0145341	KWIK-STAGE CONNECTOR	0.4



Double Headed Jacks

Kwik-Strip Double Headed Jacks are inserted into the top end of Standards to secure the Kwik-Strip Beams in position.

CODE	DESCRIPTION	MASS(kg)
1130223	KWIK-STRIP D/H JACK 610 NON-TILT	7.9



Kwik-Strip Beams

Kwik-Strip Beams support the Deck Panels, Coffers & Troughs.

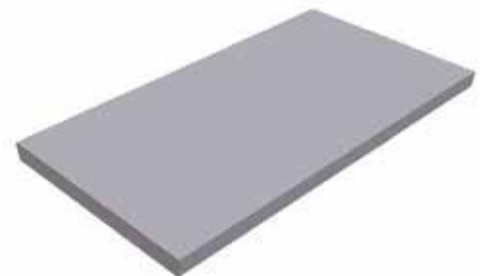
CODE	DESCRIPTION	MASS(kg)
1125183	KWIK-STRIP 2500 COINED BEAM	30.9
1125184	KWIK-STRIP 2000 COINED BEAM	25.5
1125185	KWIK-STRIP 1500 COINED BEAM	17.3
1125186	KWIK-STRIP 1219 COINED BEAM	11.9
1125187	KWIK-STRIP 1000 COINED BEAM	9.6
1125188	KWIK-STRIP 900 COINED BEAM	8.5



Deck Panels

Deck Panels are used to form the soffits of concrete slabs and are supported on the Kwik-Strip Beams.

CODE	DESCRIPTION	MASS(kg)
1145301	DECKING PANEL 825 X 450 X 2.5	13.2
1145302	DECKING PANEL 825 X 300 X 2.5	7.7
1145303	DECKING PANEL 825 X 150 X 2.5	4.6
1145304	DECKING PANEL 825 X 100 X 2.5	3.6



Jack Spacers

Jack Spacers lace the Double Headed Jacks together.

CODE	DESCRIPTION	MASS(kg)
1130227	KWIK-STRIP JACK SPACER 900 (TUBULAR)	1.1



Coffers & Troughs

Coffers

Coffers are used to form waffle shaped voids in the soffits of concrete slabs.

CODE	DESCRIPTION	MASS(kg)
8005005	FORM-COFFER 900 X 525	23.7
8005006	FORM-COFFER 900 X 425	21.0
8005007	FORM-COFFER 900 X 325	18.2
8005008	FORM-COFFER 900 X 225	15.3



Troughs

Troughs are used to form one way spanning concrete slabs.

CODE	DESCRIPTION	MASS(kg)
8010024	TROUGH GLASS FIBRE M1500 X 625	34.3
8010023	TROUGH GLASS FIBRE M750 X 625	17.1
8010034	TROUGH GLASS FIBRE M1500 X 525	31.0
8010033	TROUGH GLASS FIBRE M750 X 525	15.5
8010044	TROUGH GLASS FIBRE M1500 X 425	27.6
8010043	TROUGH GLASS FIBRE M750 X 425	13.8
8010040	TROUGH GLASS FIBRE M500 X 425	9.2
8010054	TROUGH GLASS FIBRE M1500 X 325	24.3
8010053	TROUGH GLASS FIBRE M750 X 325	12.2
8010050	TROUGH GLASS FIBRE M500 X 325	8.1
8010064	TROUGH GLASS FIBRE M1500 X 225	21.0
8010063	TROUGH GLASS FIBRE M750 X 225	10.5
8010060	TROUGH GLASS FIBRE M500 X 225	6.9
8010022	TROUGH GLASS FIBRE E1000 X 625	27.1
8010021	TROUGH GLASS FIBRE E500 X 625	15.7
8010032	TROUGH GLASS FIBRE E1000 X 525	24.7
8010031	TROUGH GLASS FIBRE E500 X 525	14.3
8010042	TROUGH GLASS FIBRE E1000 X 425	21.8
8010041	TROUGH GLASS FIBRE E500 X 425	12.6
8010052	TROUGH GLASS FIBRE E1000 X 325	18.9
8010051	TROUGH GLASS FIBRE E500 X 325	10.8
8010062	TROUGH GLASS FIBRE E1000 X 225	15.9
8010061	TROUGH GLASS FIBRE E500 X 225	8.9



Dwangs

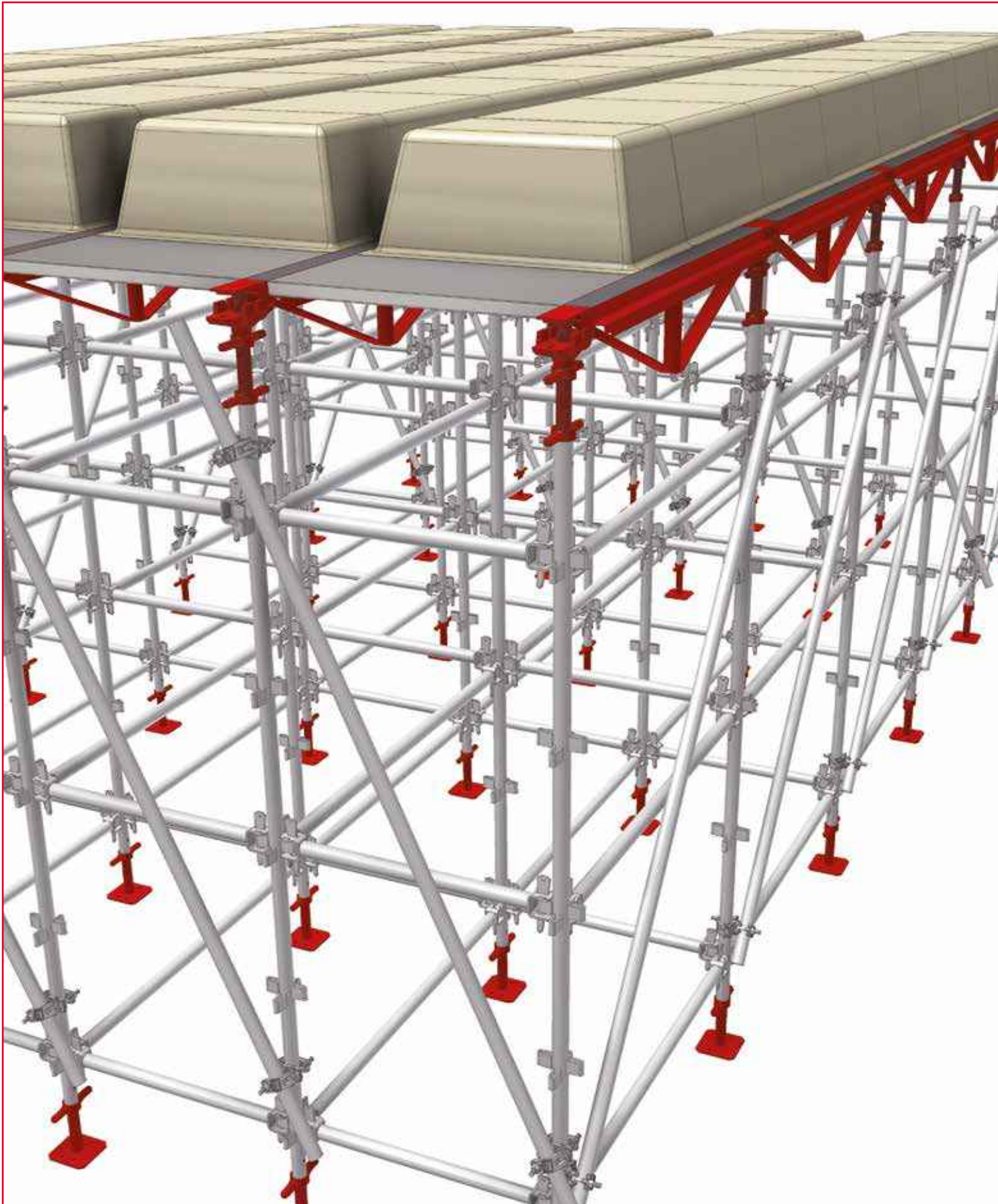
Trough Dwangs are used to internally prop the sides of the Troughs to enable the Troughs to withstand the concrete pressure.

CODE	DESCRIPTION	MASS(kg)
1130207	TROUGH GLASS FIBRE STAY/DWANG	0.8





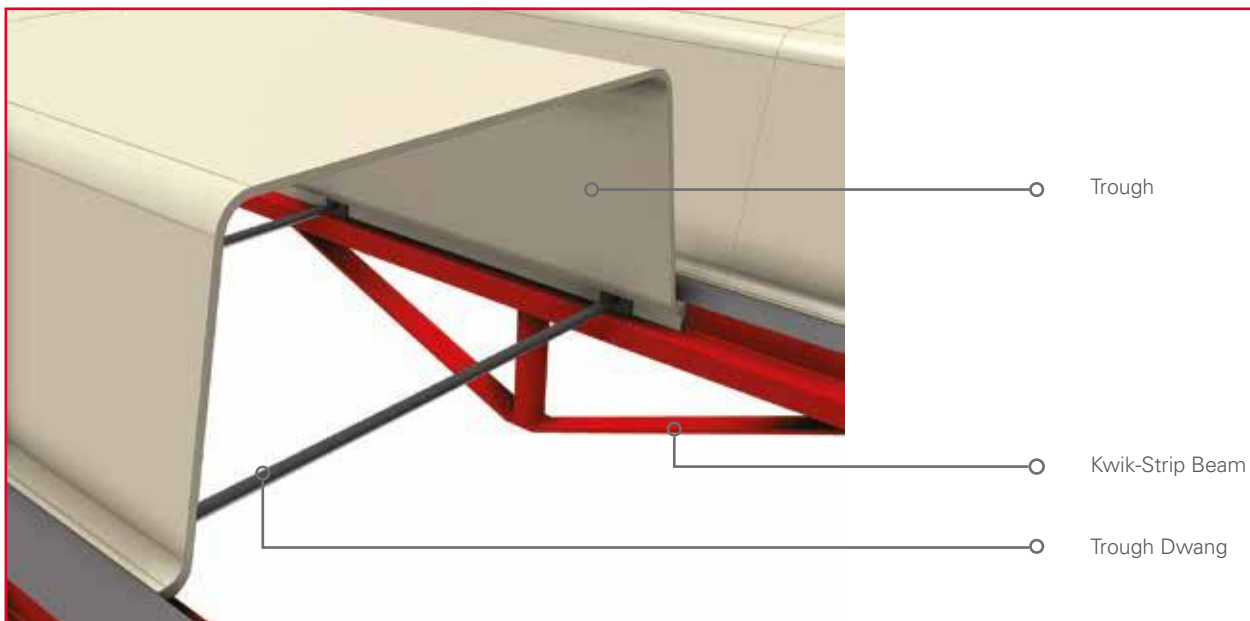
Application - Troughs on Kwik-Strip on Kwik-Stage



Application - Jack Spacers

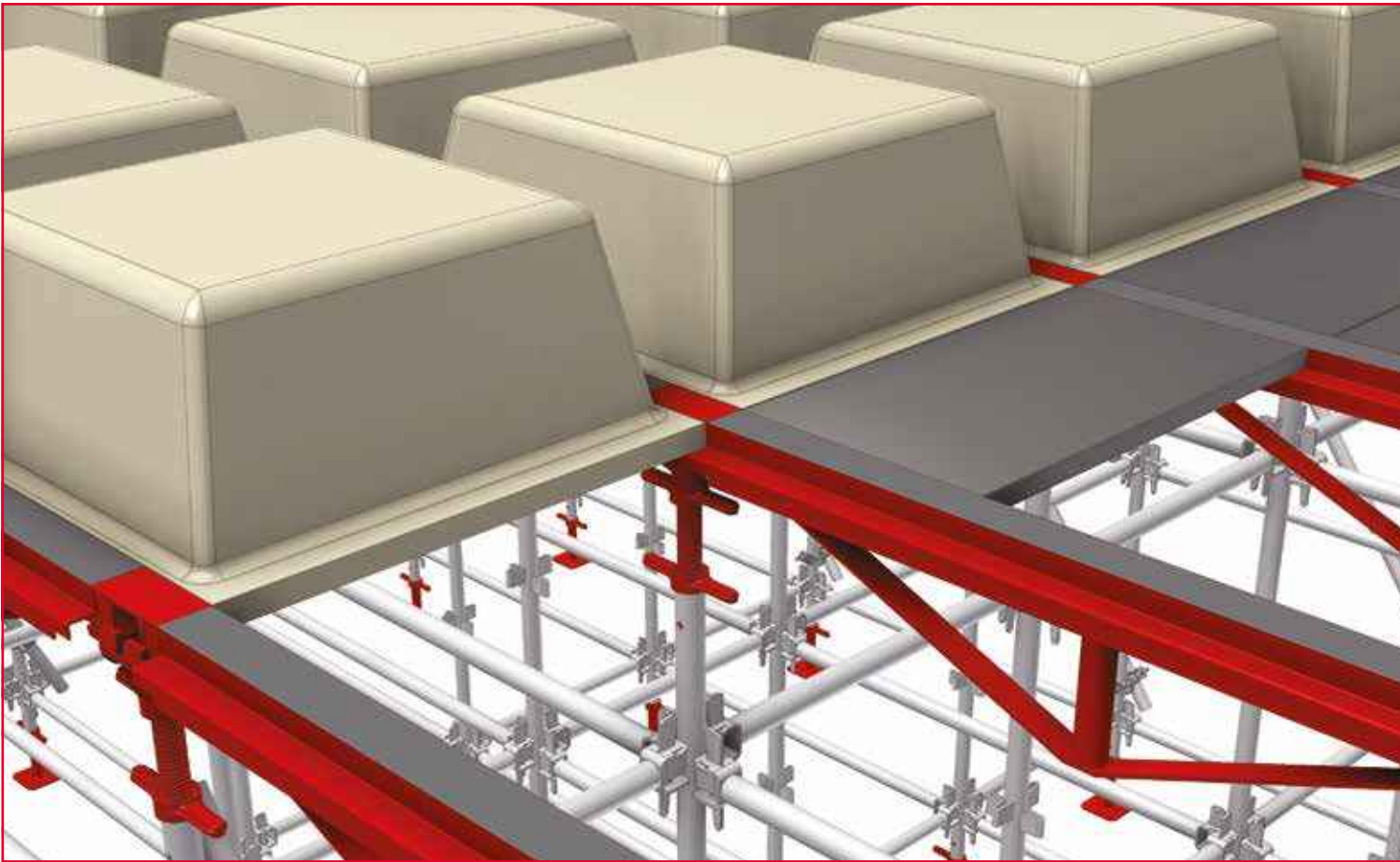


Application - Dwangs



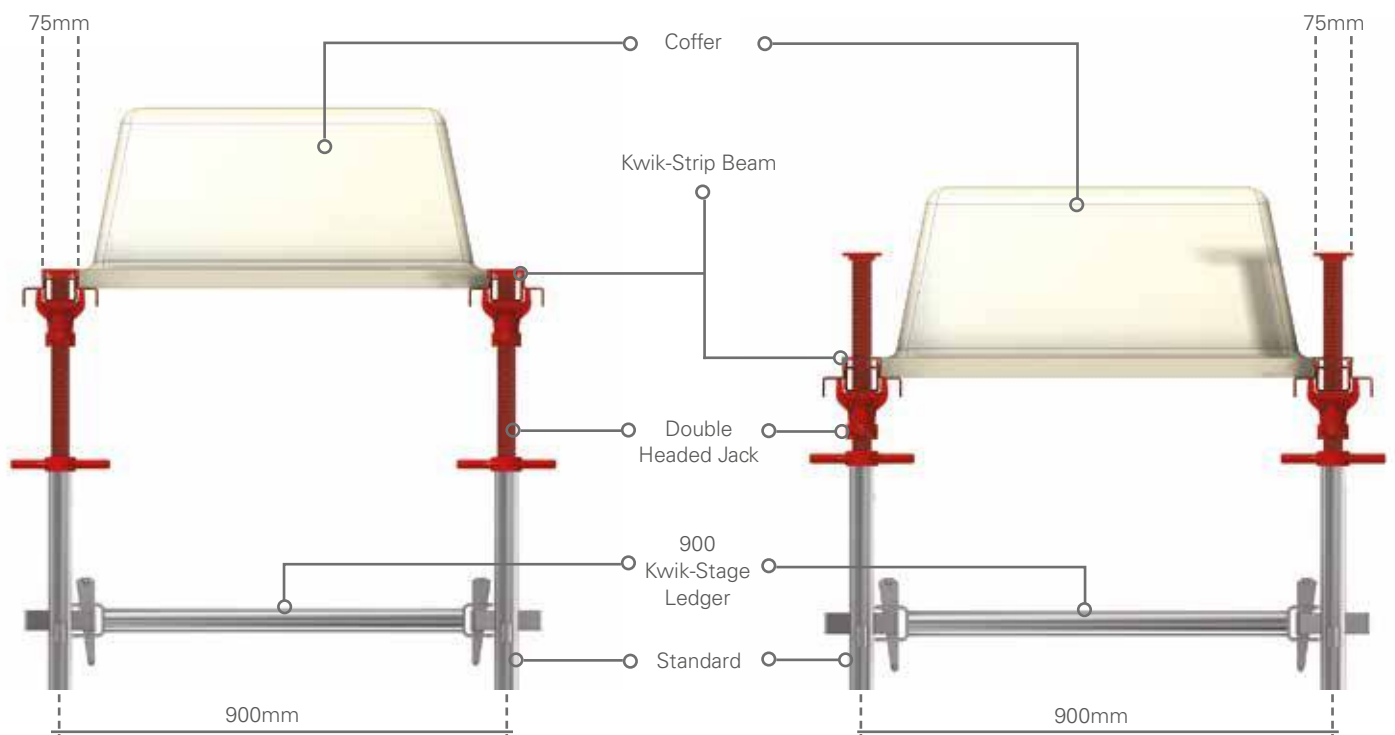


Application - Coffers on Kwik-Strip on Kwik-Stage (900mm Grid)



Unstripped Position

Stripped Position



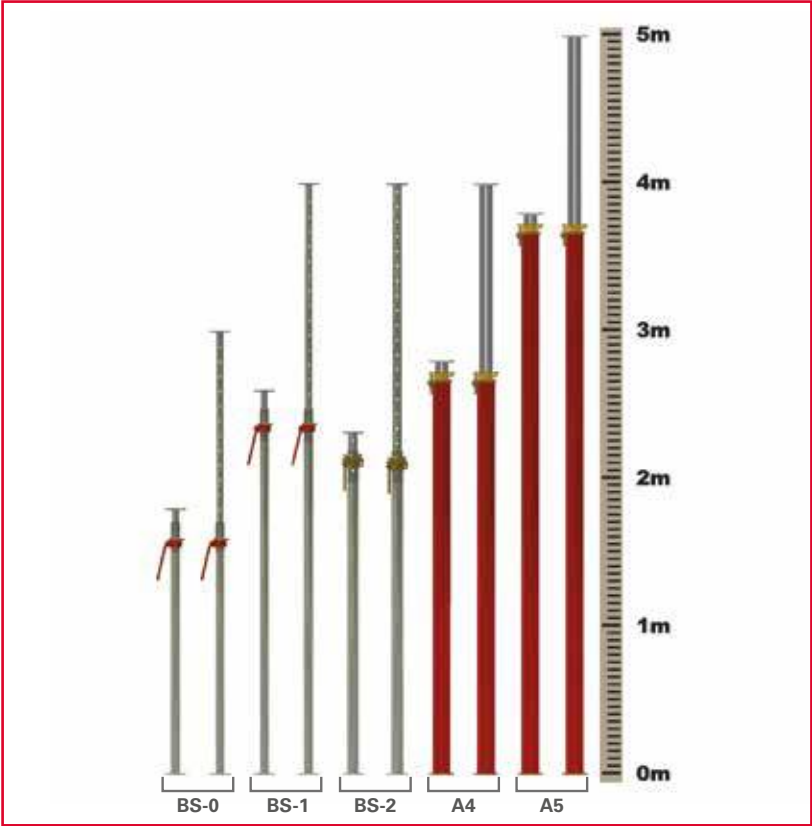
Supportwork Props

BS Props

BS Props are used for support work up to a propping height of 4000mm.

CODE	DESCRIPTION	MASS(kg)
5105007	BS-O PROP INNER	8.6
5105008	BS-O PROP OUTER	11.1
1520002	BS-1 PROP INNER	11.8
1520003	BS-1 PROP OUTER	16.4
1520006	BS-2 COMPLETE	29.8

Prop Heights



Alu-Up Props

Alu-Up Props are used for support work to a propping height of 5000mm (Single Prop).

CODE	DESCRIPTION	MASS(kg)
5105199	ALU-UP 4 PROP	25.0
5105200	ALU-UP 5 PROP	29.3



Alu-Up Prop Stubs and Extensions

Alu-Up Prop Extensions are used to extend the propping height in small increments. The Stubs are bolted to the bottom of all Props as a hammering piece.

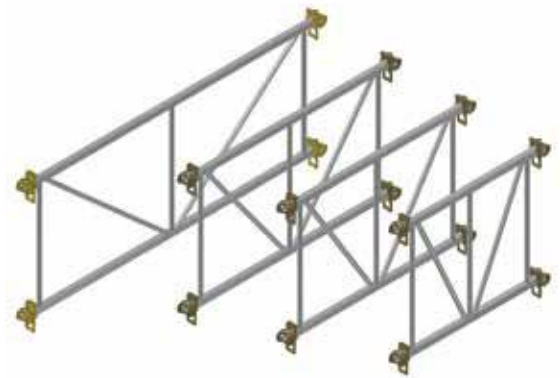
CODE	DESCRIPTION	MASS(kg)
5105205	ALU-UP EXTENSION 1000	12.2
5105204	ALU-UP EXTENSION 500	7.5
5105210	ALU -UP STUB 150	4.3



Alu-Up Trusses

Alu-Up Trusses are used to create towers and brace the Alu-Up Props. They further enhance the stability and loading capacity of the props.

CODE	DESCRIPTION	MASS(kg)
5105206	ALU-UP TRUSS 2500	32.3
5105207	ALU-UP TRUSS 1800	26.1
5105208	ALU-UP TRUSS 1600	24.4
5105209	ALU-UP TRUSS 1294	21.8



BS Prop Tri-pod

BS Prop Tri-pods are used to keep un-laced BS Props in the vertical position.

CODE	DESCRIPTION	MASS(kg)
1130017	BS PROP TRI-POD	10.1



Alu-Up Prop Tri-pod

Alu-Up Tri-Pods are used to keep un-laced Alu-Up Props in the vertical position.

CODE	DESCRIPTION	MASS(kg)
5105201	ALU-UP PROP TRI-POD	15.7

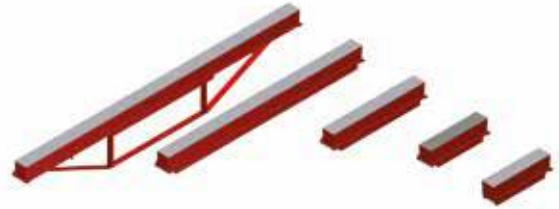


Kwik-Deck Components

Kwik-Deck Beams

Kwik-Deck Beams are used to support the Kwik-Deck Panels & Coffers Support Beams.

CODE	DESCRIPTION	MASS(kg)
31004	KWIK DECK BEAM 2500	31.7
31003	KWIK-DECK BEAM 1800	21.7
31006	KWIK-DECK BEAM 1500	18.1
31007	KWIK-DECK BEAM 1200	14.5
31002	KWIK-DECK BEAM 900	11.0
31001	KWIK-DECK BEAM 600	7.6
31005	KWIK-DECK DIRECTION CHANGE BEAM	7.4



Kwik-Deck Panels

Kwik-Deck Panels are used to support the concrete slab thickening between the Coffers.

CODE	DESCRIPTION	MASS(kg)
30001	KWIK-DECK PANEL 1500 X 600	19.4
30002	KWIK-DECK PANEL 1500 X 300	12.9
30003	KWIK-DECK PANEL 1500 X 150	9.3
30004	KWIK-DECK PANEL 1194 X 600	15.6
30005	KWIK-DECK PANEL 1194 X 300	10.3
30006	KWIK-DECK PANEL 1194 X 150	7.3
30007	KWIK-DECK PANEL 800 X 600	11.2
30008	KWIK-DECK PANEL 800 X 300	7.3
30009	KWIK-DECK PANEL 800 X 150	5.1



Kwik-Deck Drop-Heads

The Kwik-Deck Drop-Heads are bolted to the top ends of props or BT Base Jacks to secure the Kwik-Deck Beams in position.

CODE	DESCRIPTION	MASS(kg)
32001	KWIK-DECK DROP-HEAD	6.9



Kwik-Deck Coffer Support Beams

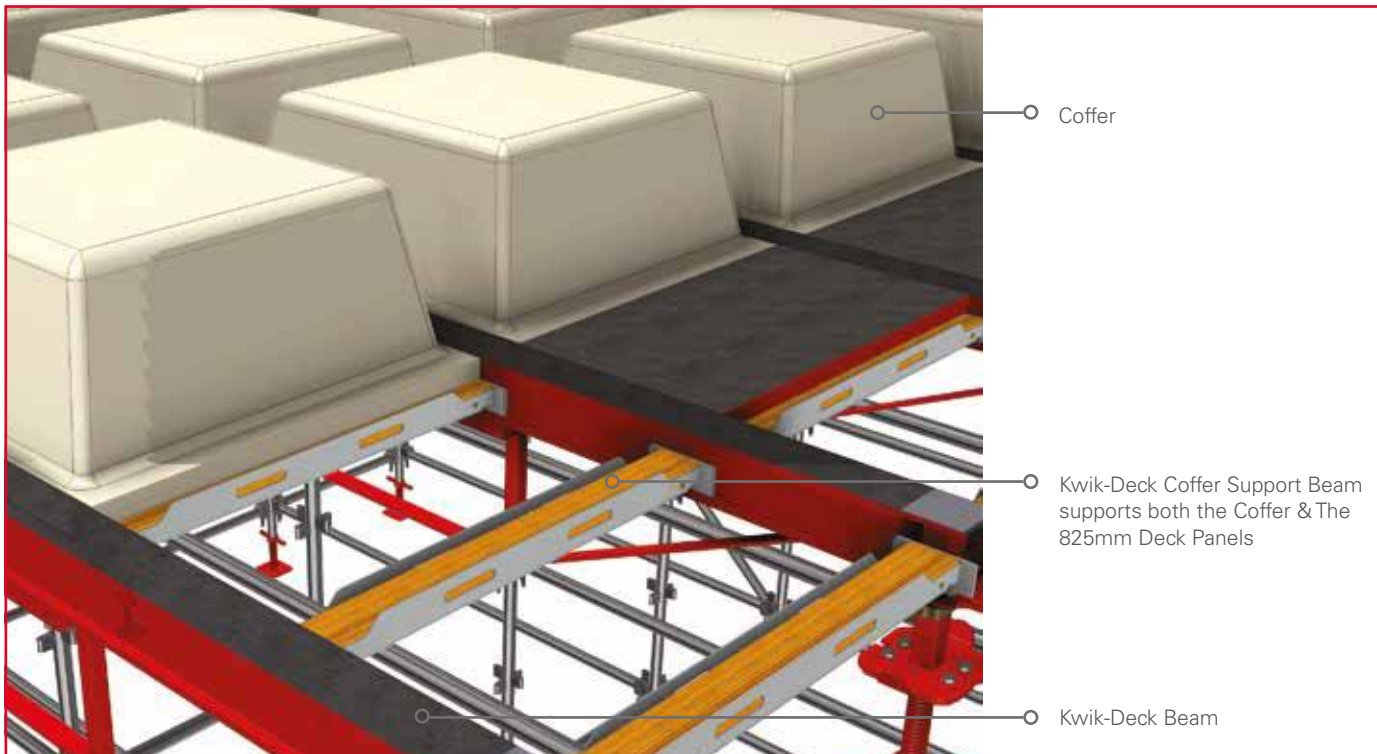
Kwik-Deck Coffer Support Beams are used to support and keep the Coffers and the Deck Panels in position.

CODE	DESCRIPTION	MASS(kg)
31030	KWIK-DECK COFFER SUPPORT BEAM	4.8



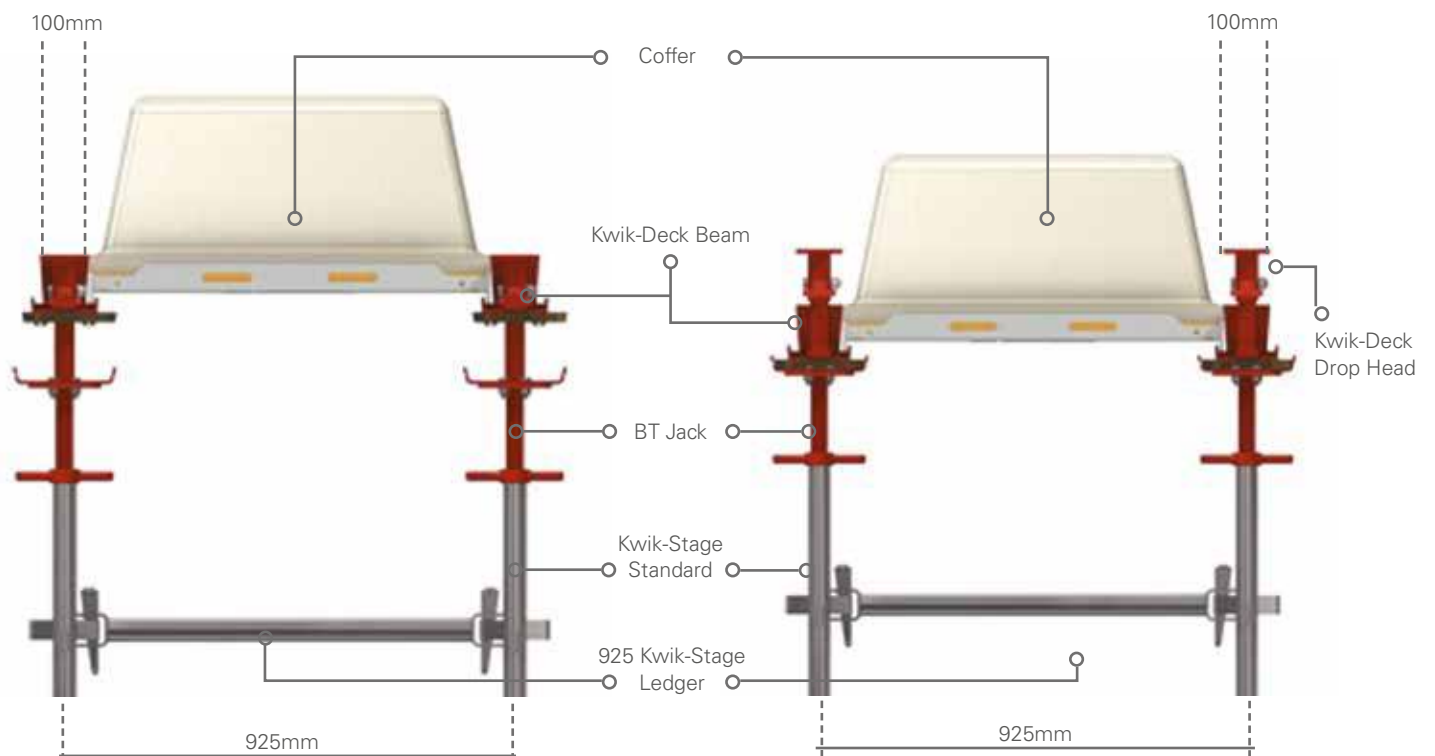


Application - Coffers on Kwik-Deck on Kwik-Stage (925mm Grid)



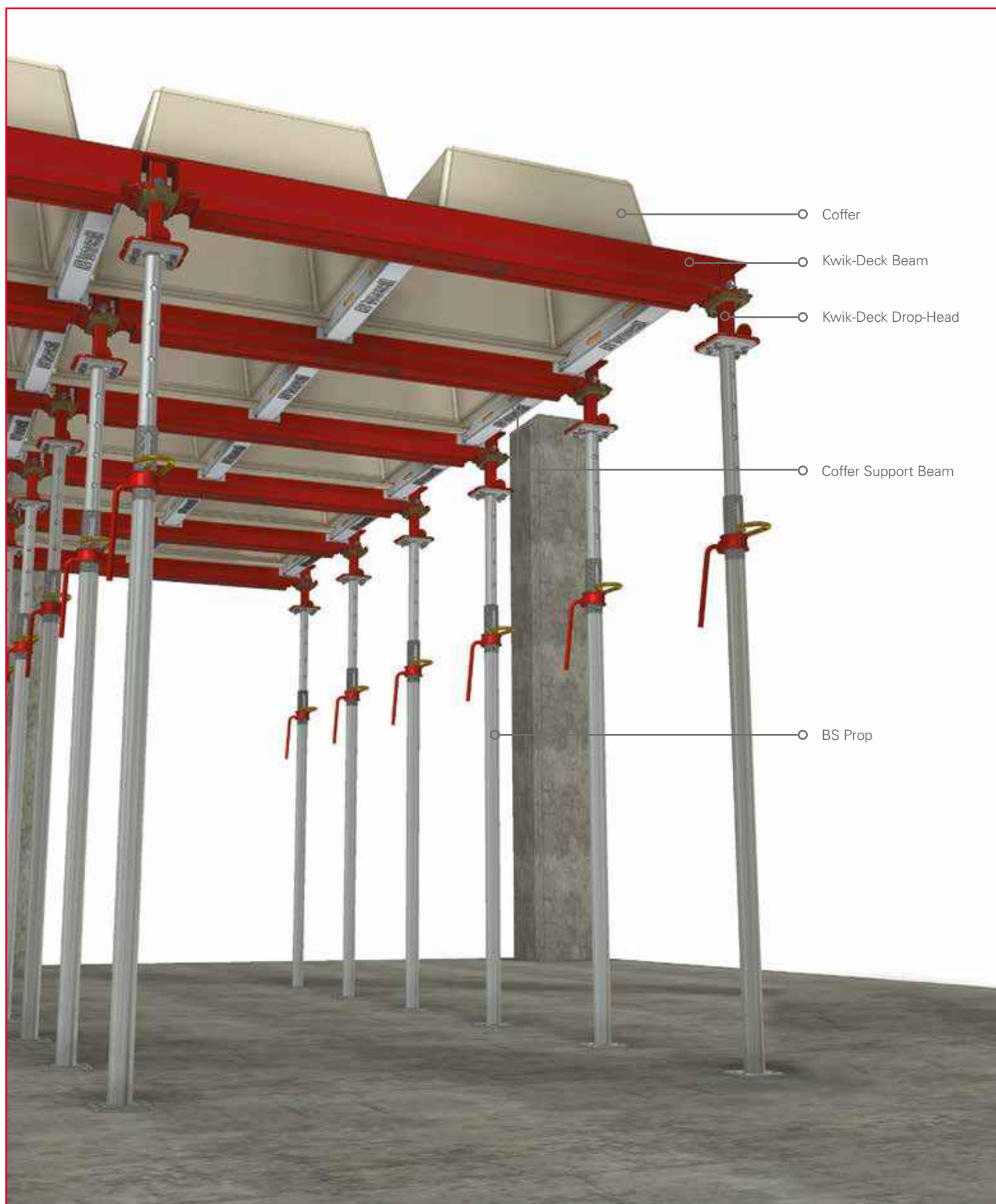
Unstripped Position

Stripped Position



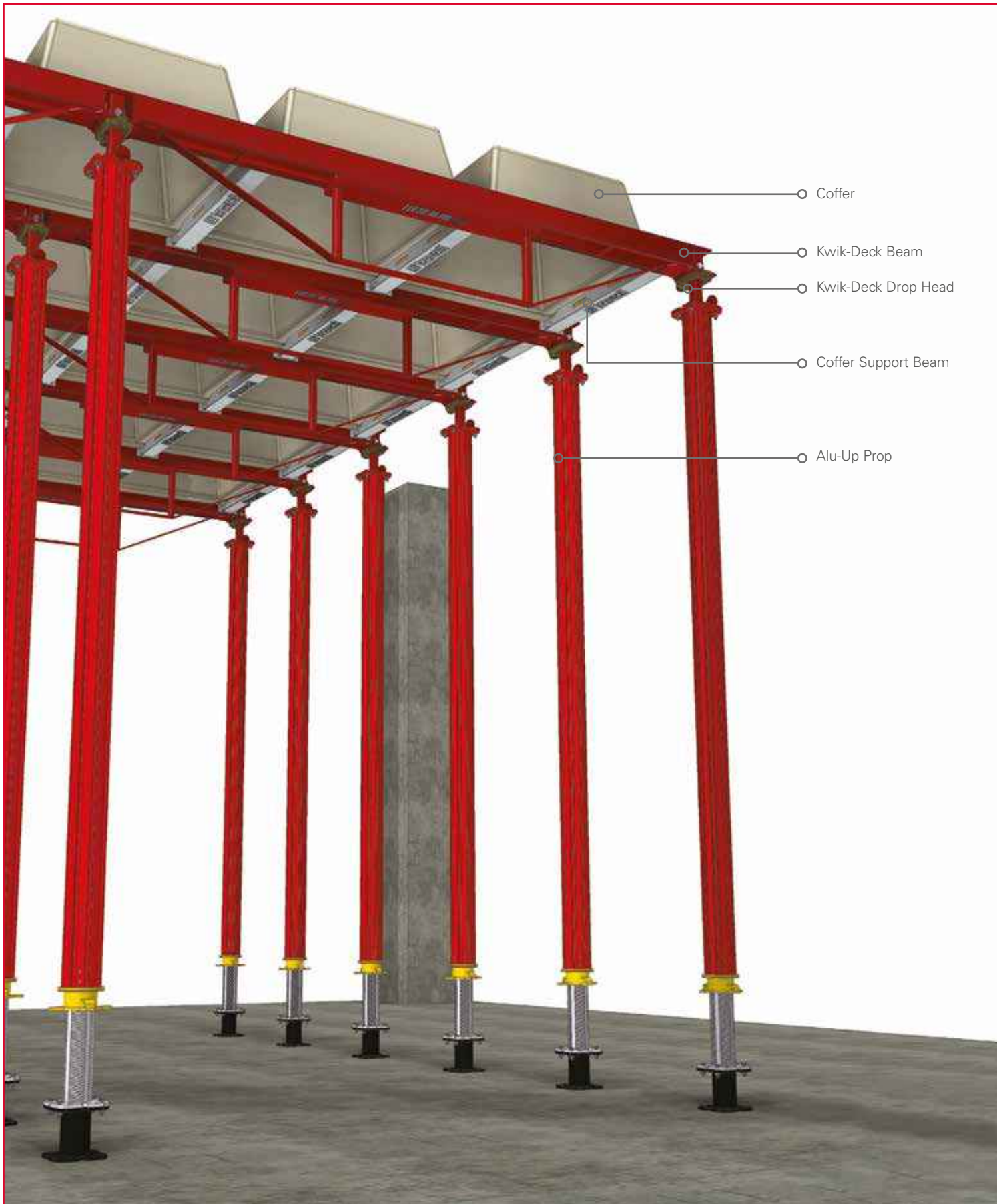
*Note: Coffers Supported on the Kwik-Deck system work on a 900 x 925mm Grid due to the 100mm wide Kwik-Deck beams.

Application - Coffers on Kwik-Deck on BS Props

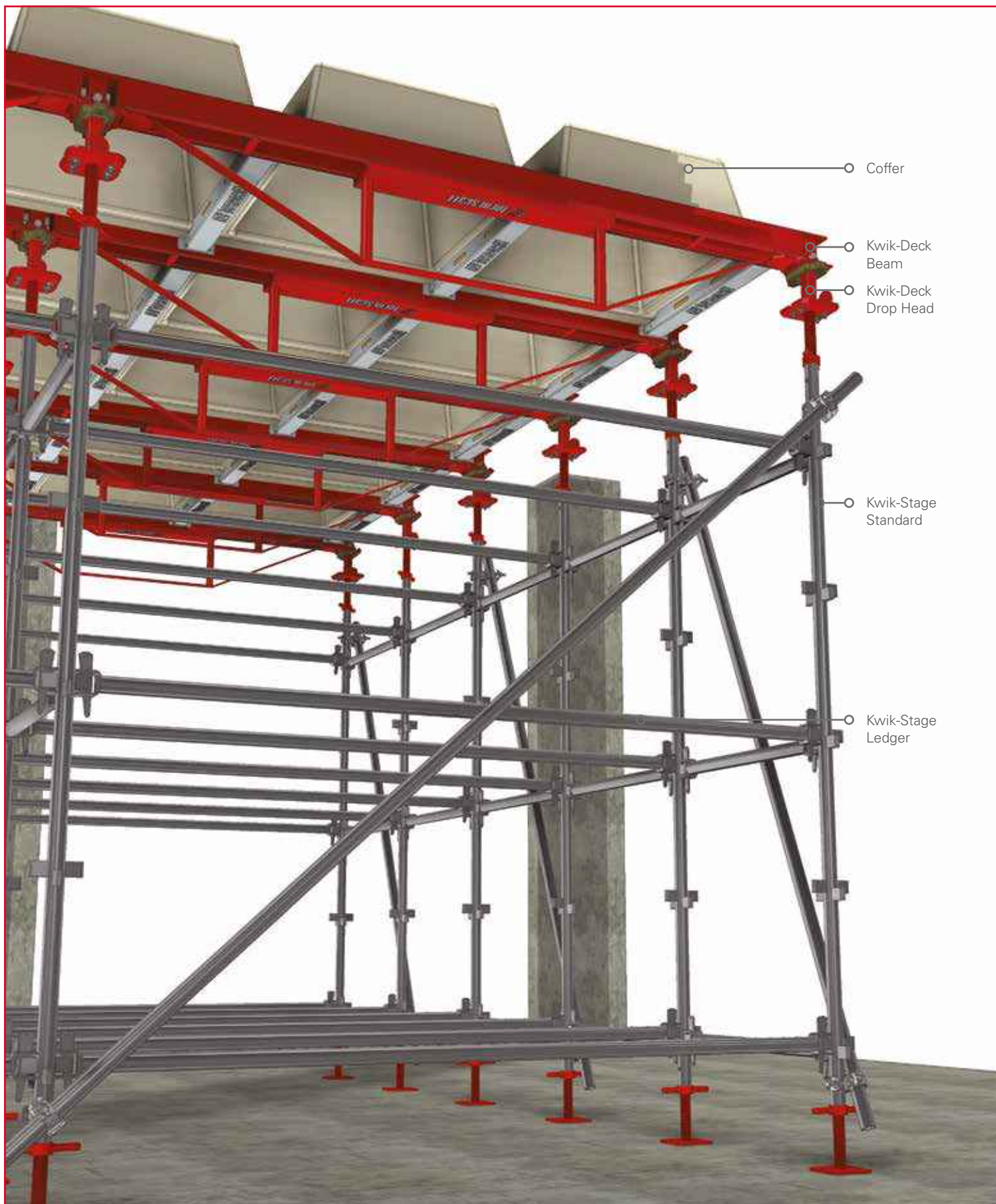




Application - Coffers on Kwik-Deck on Alu-Up Props



Application - Coffers on Kwik-Deck on Kwik-Stage



International Branches

Botswana - Gaborone

Plot 31364, Gaborone North,
Gaborone,
Botswana
+267 396 2000

Eswatini - Matsapha

36 Ingaja Street,
Matsapha,
Eswatini
+268 2518 8360

Ghana - Accra

Plot 29, Off Spintex Road, Tema
Motorway Industrial Area, Accra,
Ghana
+233 303 973 722

Mauritius - Port Louis

72201, Petit Camp,
Phoenix (Near Bagatelle Dam),
Mauritius
+230 286 6176 / +230 5940 2551

Mozambique - Maputo

Belulane, Parcella 15988, Boane
Matola Rio, Maputo,
Mozambique
+258 84 163 8905

Namibia - Windhoek

Cnr Nickle & Michelle, McClean Street,
Prosperita, Windhoek,
Namibia
+264 61 425 350

Tanzania – Dar es Salaam

Cnr Mwaikibaki Road & Kilimani Close
Plot 1034/5 Mbezi Kawe
Dar es Salaam, Tanzania
+255 74 299 8022

Zambia - Kitwe

12867 Chingola Road, Saloba Business Park,
Chimwemwe, Kitwe,
Zambia
+260 966 880 009

Zambia - Lusaka

Plot 397 A/3/B Kafue Road
Lusaka,
Zambia
+260 968 491 061

Zambia - Solwezi

Suite 12, Kansanshi Road, Plot No 2945,
Solwezi,
Zambia
+260 768 935 762

South African Branches

Ballito

Labora Terra Industrial Park
Shakas Rock Road, Umhlali
Ballito, KwaZulu Natal
+27 (0) 32 947 9430

Bloemfontein

26 Tibbie Visser Street
Estoire, Bloemfontein
Free State
+27 (0) 51 432 5555

Cape Town

6 Rondevallei Road, Hagley
Kuilsrivier, Cape Town
Western Cape
+27 (0) 21 528 6500

Durban

16 Stroude Place, Prospection
Isipingo,
KwaZulu Natal
+27 (0) 31 902 2677

East London

5 Ray Craib Crescent,
Beacon Bay North
Beacon Bay, Eastern Cape
+27 (0) 43 748 2558

Emalahleni

Stand 64, Geodesic Crescent
Marelden Ext 3
Mpumalange
+27 (0) 13 690 2833

George

10 Ring Road, George Industrial
George,
Western Cape
+27 (0) 44 695 0204

Gqeberha

4 Kendle Street
Neave Industrial Area,
Eastern Cape
+27 (0) 41 453 2317

Kathu

33 Kalk Street, Industrial Area
Kathu,
Northern Cape
+27 (0) 53 723 2194

Margate

Airport Park, Links Road
Margate Ext 3,
KwaZulu Natal
+27 (0) 39 317 1708

Mbombela

Erf 379, Rocky Drift
White River,
Mbombela
+27 (0) 13 758 1036

Midrand

Poplar Crescent, Lords View
Industrial Park, Klipfontein
Chloorkop X66, Gauteng
+27 (0) 10 601 6313

Newcastle

6 Schonland Street
Riverside Industrial Area
Newcastle, KwaZulu Natal
+27 (0) 34 375 7697

Polokwane

62 Goud Street, Laboria
Polokwane Ext 8,
Limpopo
+27 (0) 15 293 0450

Richards Bay

111 Allumina Allee St,
Alton, Richards Bay
KwaZulu Natal
+27 (0) 35 751 1140

Rustenburg

3 Ferro Street, Rustenburg
North West Province
+27 (0) 14 538 2540

Head Office

181 Barbara Road,
Elandsfontein, Gauteng
Tel +27 (0) 11 842 4000

coffers & troughs

Waco Africa / Head Office:
181 Barbara Road, Elandsfontein, Gauteng
Tel: +27 (0) 11 842 4000

