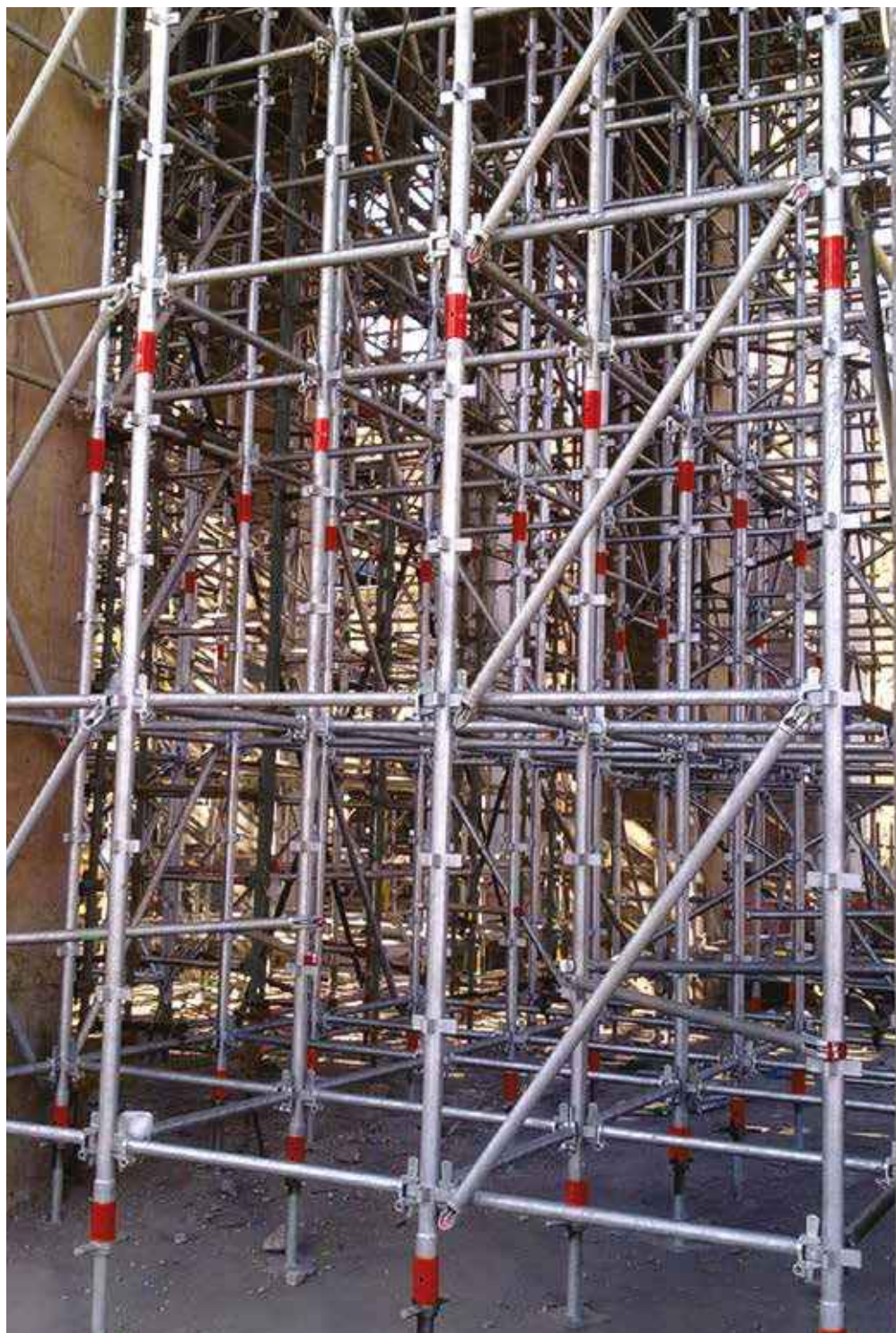


**Product Catalogue**  
**Support Work**

**FS** **super-stage**



**FS** **form-scaff**

**Formwork & Scaffolding**  
**Solutions**

We are  
**WACO**



Form-Scaff is South Africa's leading supplier of formwork, falsework and scaffolding to the construction and civil engineering industries. Form-Scaff not only manufactures, hires and sells world-class products, but also provides the design skills, technical advice and support that comes with having 50 years experience and more than 30 branches locally and internationally.

### **We are Waco International**

Form-Scaff is part of Waco International, a focused equipment rental and industrial services business with operations in Africa (South Africa and other sub-Saharan African countries), Australasia (Australia and New Zealand) and the United Kingdom.

The Group provides services in the areas of formwork, shoring and scaffolding, insulation, painting and blasting, hydraulics and suspended access platforms, relocatable modular buildings, portable sanitation products and integrated hygiene services.

#### **Disclaimer:**

Copyright in this catalogue vests in Form-Scaff, a division of Waco Africa (Proprietary) Limited ("Form-Scaff") and extends inter alia, to the making of copies in whole or in part without the prior written consent of Form-Scaff.

While every effort has been made to ensure the accuracy of the information in this catalogue, we cannot accept responsibility for any errors which may occur as a result of reliance on the contents of this catalogue and are not liable for any loss of any nature that may be incurred as a result of such reliance. Details of any of the products may change without prior notice.

The customer must ensure that 'good practice' is adopted on site by competent persons and that the products shown in this catalogue are erected, used and stripped in accordance with the relevant Codes of Practice and the OHS Act and Regulations 85 of 1993. This catalogue does not contain any design detail but lists and depicts the items available under this product range. The responsibility for design is the responsibility of the customer.

**Note:** The colours used in this document are for illustrative purposes only and may differ on actual products



# Contents



**super-stage**

**Page 2** Super-Stage Overview

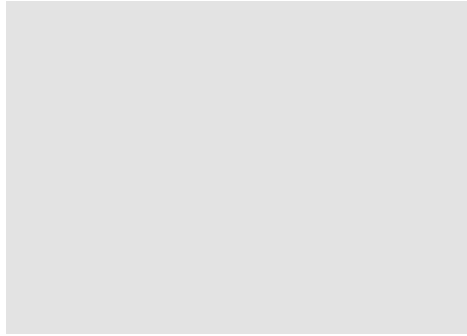
**Page 3** General Assembly

**Page 4** Standards & Ledgers

**Page 5** Braces

## Contact Details

**Page 9** Head Office & Branches





# super-stage



## Super-Stage Supportwork

Super-Stage is Form-Scaff's heavy duty 80kN Shoring system. The system is based on the ever popular Kwik-Stage design, but uses a 60mm diameter Standard, a different type of Ledger and modular Bracing specifically designed to enable the high 80kN leg loads. Fitting both the Diagonal and Plan Braces is very quick and easy due to click-in / snap-on features and ensures a 100% plumb and square shoring system. Super-Stage shares the uniquely designed Ledgers and Diagonal Braces with Form-Scaff's new Super-Scaff scaffolding system.

### System Features

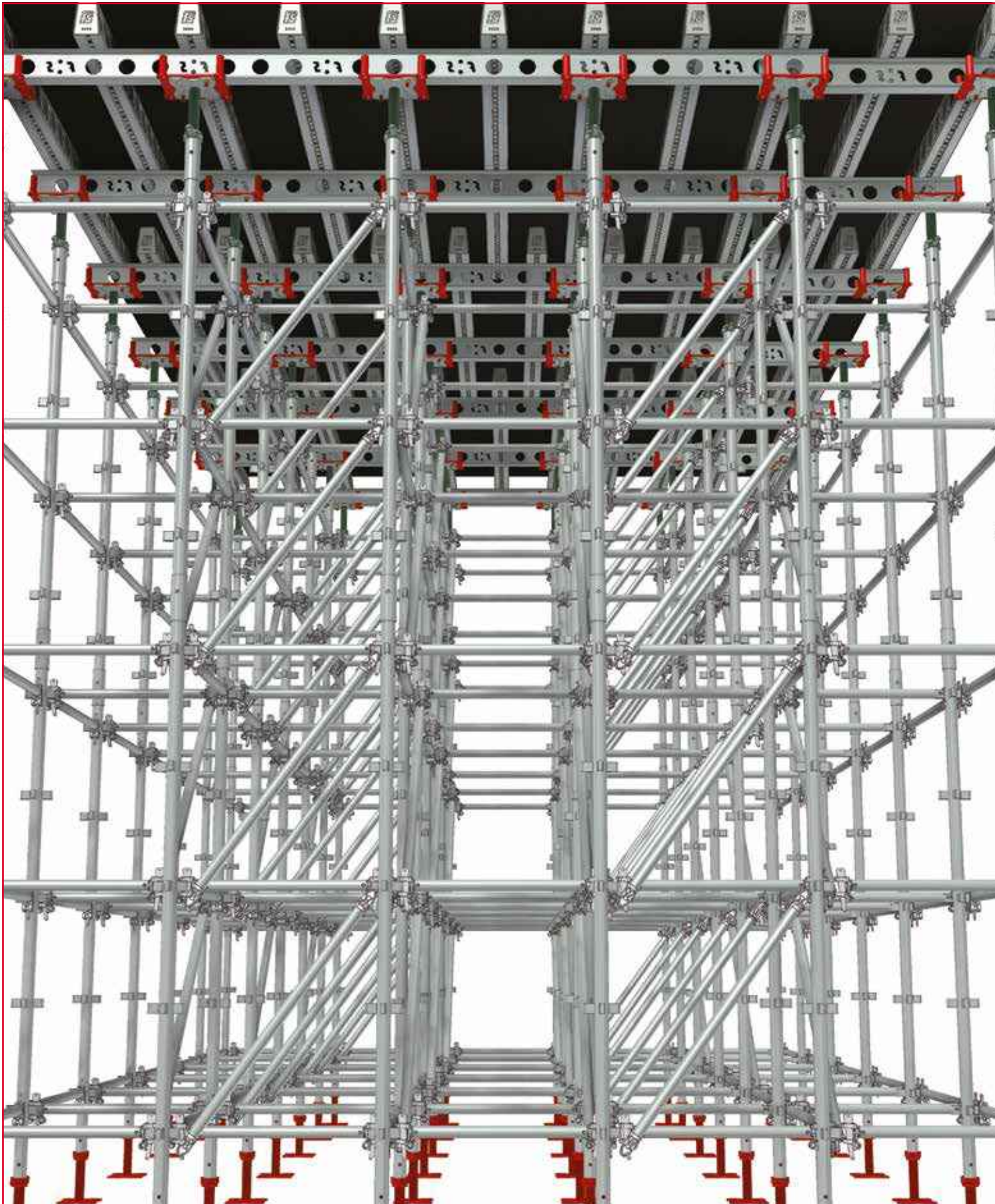
- 80kN system.
- Quick and easy to assemble and disassemble.
- The clip-on bracing speeds up the erection and stripping time.
- Ledgers and Diagonal Braces are interchangeable with the Super-Scaff system.
- Modular design ensures ease of erection.
- Versatile height and width configurations.
- Conforms to all South African standards and regulations.





**super-stage**

## General Assembly



# Standards & Ledgers

## Super-Stage BT Jacks

Super-Stage BT Jacks are inserted into the ends of the Super-Stage Standards to provide vertical height adjustment. Numerous hole positions in the Base Plate of the Jack facilitates the fixture of different main bearers directly onto the Jack using lindapter connections. The Super-Stage Fork-Head also fits onto the base plate.

CODE	DESCRIPTION	MASS(kg)
1315050	SUPER-STAGE BT JACK 610 R/O	16.8



## Super-Stage Standards

The 60mm diameter Super-Stage Standards make-up the vertical support for the formwork or bearers. Sockets welded to the end of each Standard contributes enormously to the speed and safety of the system as it requires no loose fitting connector.

CODE	DESCRIPTION	MASS(kg)
1310006	SUPER-STAGE STANDARD 3000	23.4
1310005	SUPER-STAGE STANDARD 2500	19.7
1310004	SUPER-STAGE STANDARD 2000	16.0
1310003	SUPER-STAGE STANDARD 1500	12.3
1310002	SUPER-STAGE STANDARD 1000	8.6
1310001	SUPER-STAGE STANDARD 500	4.9



## Super-Ledgers

Super-Ledgers are horizontal members used to keep the Super-Stage Standards in a vertical position. The hole in the Ledger's end fitting provides a connection point for the Super-Diagonal Brace. Super-Ledgers can also be used on Super-Scaff and Kwik-Stage.

CODE	DESCRIPTION	MASS(kg)
1310021	SUPER-LEDGER 2500	9.2
1310022	SUPER-LEDGER 2000	7.7
1310023	SUPER-LEDGER 1500	6.1
1310025	SUPER-LEDGER 1219	5.2
1310029	SUPER-LEDGER 900	4.2



## Super-Stage Fork-Head

The Super-Stage Fork-Head seats on top of the BT Jack and is secured in place with two R-Clips. The Fork-Head allows a variety of main bearer sizes to be used.

CODE	DESCRIPTION	MASS(kg)
1315051	SUPER-STAGE FORK-HEAD	5.4



## Super-Diagonal Braces

The Super-Diagonal Braces simply click into the hole in the Super-Ledger end-fitting and can therefore also be used on Super-Scaff.

CODE	DESCRIPTION	MASS(kg)
1310040	SUPER-DIAGONAL BRACE 2500 X 1500	10.2
1310041	SUPER-DIAGONAL BRACE 2000 X 1500	9.0
1310043	SUPER-DIAGONAL BRACE 1500 X 1500	7.9
1310044	SUPER-DIAGONAL BRACE 1219 X 1500	7.3
1310045	SUPER-DIAGONAL BRACE 900 X 1500	6.8
1310054	SUPER-DIAGONAL BRACE 2500 X 1000	9.5
1310055	SUPER-DIAGONAL BRACE 2000 X 1000	8.1
1310049	SUPER-DIAGONAL BRACE 1500 X 1000	6.8
1310050	SUPER-DIAGONAL BRACE 1219 X 1000	6.1
1310051	SUPER-DIAGONAL BRACE 900 X 1000	5.5

\* The first dimension refers to the horizontal length of the bay and the second to the vertical height.



## Super-Stage Plan Braces

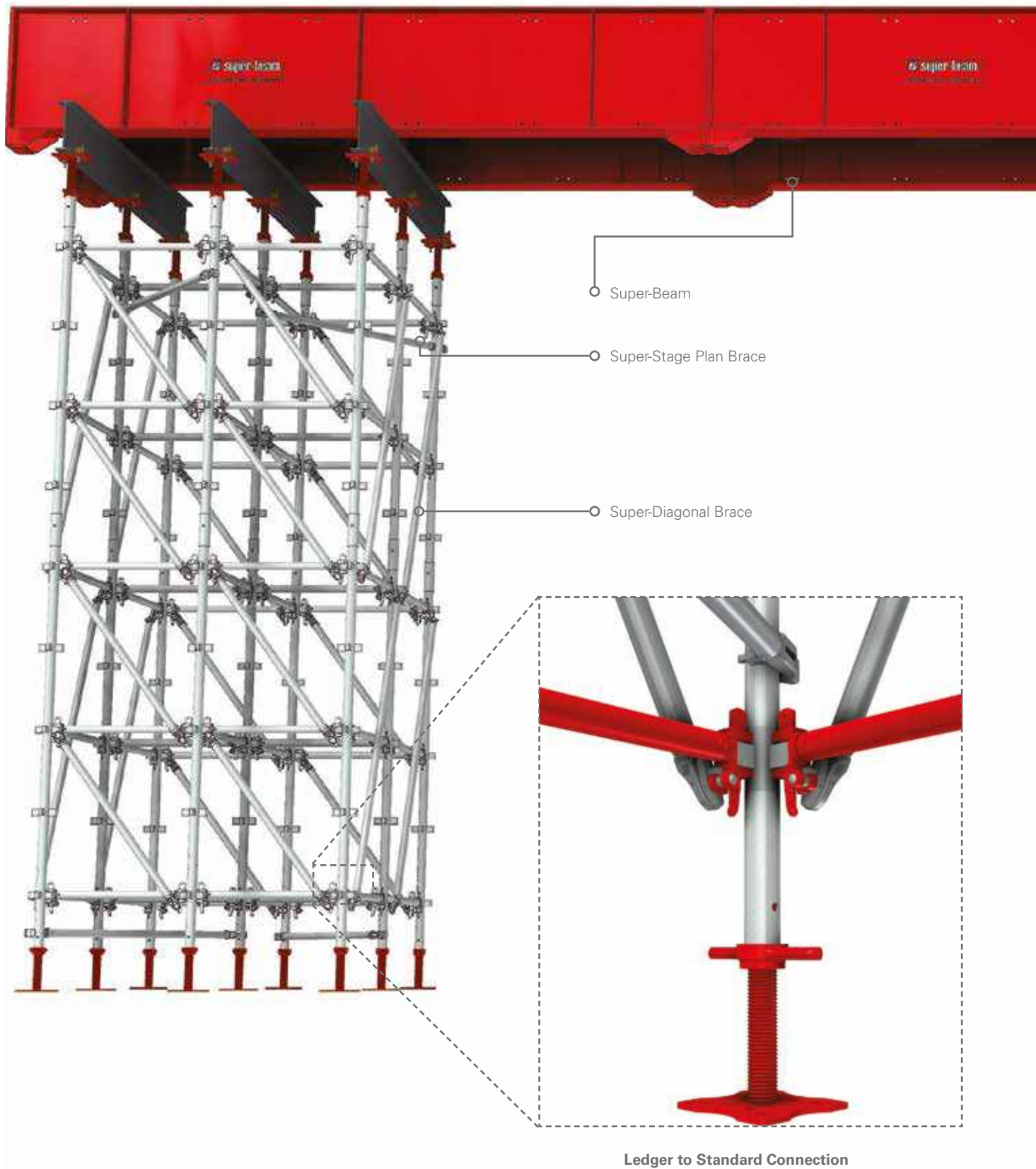
The Super-Stage Plan Brace ensures 100% square bay sizes. It is placed into position by simply clipping it onto the Super-Stage Standard at the relevant height.

CODE	DESCRIPTION	MASS(kg)
1310070	SUPER-STAGE PLAN BRACE 2512 X 2512	15.0
1310071	SUPER-STAGE PLAN BRACE 2512 X 2012	13.9
1310072	SUPER-STAGE PLAN BRACE 2512 X 1512	13.0
1310073	SUPER-STAGE PLAN BRACE 2512 X 1231	12.6
1310074	SUPER-STAGE PLAN BRACE 2512 X 912	12.2
1310075	SUPER-STAGE PLAN BRACE 2012 X 2012	12.7
1310076	SUPER-STAGE PLAN BRACE 2012 X 1512	11.7
1310077	SUPER-STAGE PLAN BRACE 2012 X 1231	11.2
1310078	SUPER-STAGE PLAN BRACE 2012 X 912	10.8
1310079	SUPER-STAGE PLAN BRACE 1512 X 1512	10.5
1310080	SUPER-STAGE PLAN BRACE 1512 X 1231	10.0
1310081	SUPER-STAGE PLAN BRACE 1512 X 912	9.4
1310082	SUPER-STAGE PLAN BRACE 1231 X 1231	9.3
1310083	SUPER-STAGE PLAN BRACE 1231 X 912	8.7
1310084	SUPER-STAGE PLAN BRACE 912 X 912	7.9





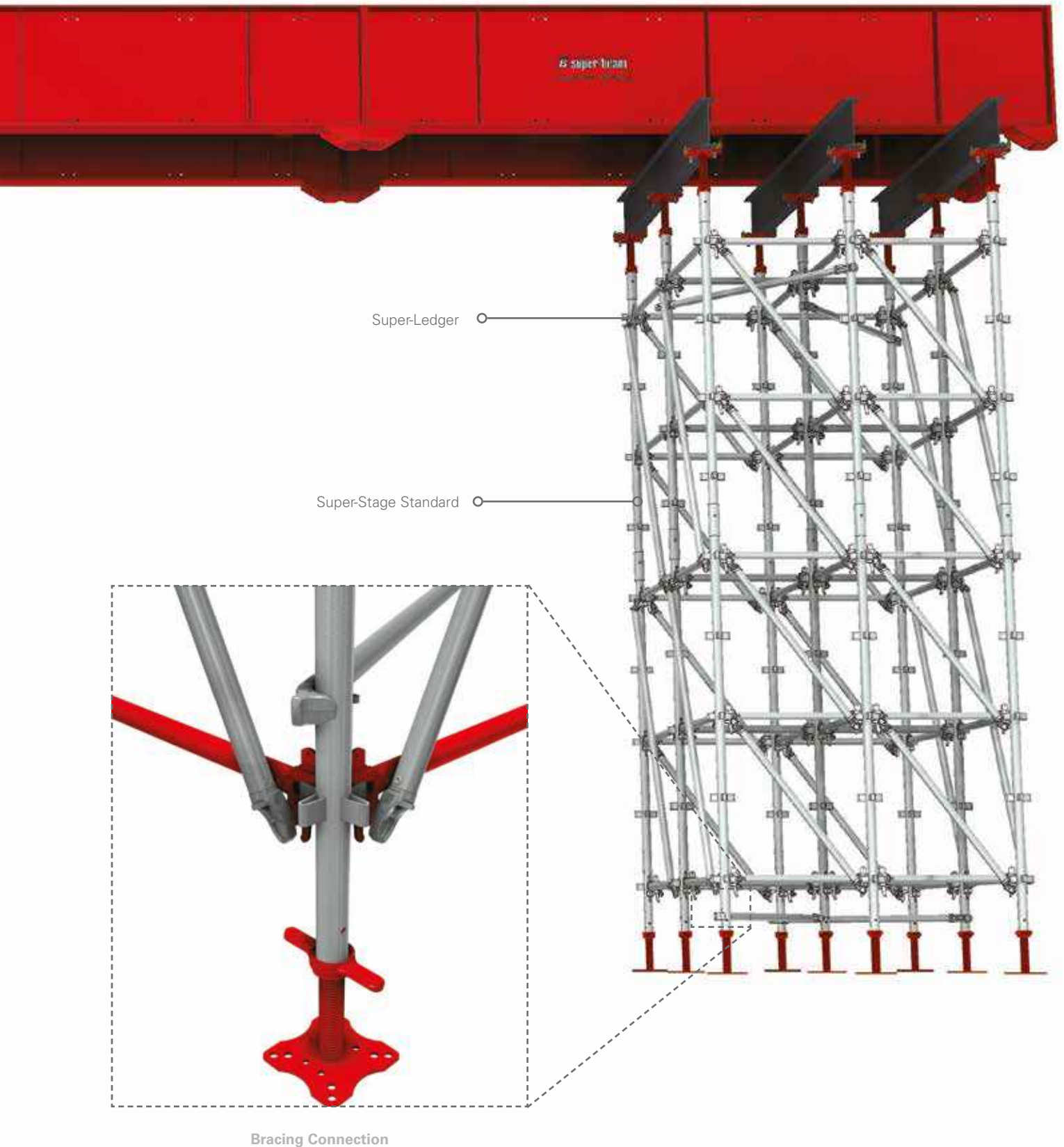
## Application - Super-Beams on Super-Stage







**super-stage**



## Application - Multi-Form on Super-Stage





### International Branches

#### Botswana - Gaborone

Plot 31364, Gaborone North,  
Gaborone,  
Botswana  
+267 396 2000

#### Eswatini - Matsapha

36 Ingaja Street,  
Matsapha,  
Eswatini  
+268 2518 8360

#### Ghana - Accra

Plot 29, Off Spintex Road, Tema  
Motorway Industrial Area, Accra,  
Ghana  
+233 303 973 722

#### Mauritius - Port Louis

72201, Petit Camp,  
Phoenix (Near Bagatelle Dam),  
Mauritius  
+230 286 6176 / +230 5940 2551

#### Mozambique - Maputo

Belulane, Parcella 15988, Boane  
Matola Rio, Maputo,  
Mozambique  
+258 84 163 8905

#### Namibia - Windhoek

Cnr Nickle & Michelle, McClean Street,  
Prosperita, Windhoek,  
Namibia  
+264 61 425 350

#### Tanzania – Dar es Salaam

Cnr Mwaikibaki Road & Kilimani Close  
Plot 1034/5 Mbezi Kawe  
Dar es Salaam, Tanzania  
+255 74 299 8022

#### Zambia - Kitwe

12867 Chingola Road, Saloba Business Park,  
Chimwemwe, Kitwe,  
Zambia  
+260 966 880 009

#### Zambia - Lusaka

Plot 397 A/3/B Kafue Road  
Lusaka,  
Zambia  
+260 968 491 061

#### Zambia - Solwezi

Suite 12, Kansanshi Road, Plot No 2945,  
Solwezi,  
Zambia  
+260 768 935 762

### South African Branches

#### Ballito

Labora Terra Industrial Park  
Shakas Rock Road, Umhlali  
Ballito, KwaZulu Natal  
+27 (0) 32 947 9430

#### Bloemfontein

26 Tibbie Visser Street  
Estoire, Bloemfontein  
Free State  
+27 (0) 51 432 5555

#### Cape Town

6 Rondevallei Road, Hagley  
Kuilsrivier, Cape Town  
Western Cape  
+27 (0) 21 528 6500

#### Durban

16 Stroude Place, Prospection  
Isipingo,  
KwaZulu Natal  
+27 (0) 31 902 2677

#### East London

5 Ray Craib Crescent,  
Beacon Bay North  
Beacon Bay, Eastern Cape  
+27 (0) 43 748 2558

#### Emalahleni

Stand 64, Geodesic Crescent  
Marelden Ext 3  
Mpumalange  
+27 (0) 13 690 2833

#### George

10 Ring Road, George Industrial  
George,  
Western Cape  
+27 (0) 44 695 0204

#### Gqeberha

4 Kendle Street  
Neave Industrial Area,  
Eastern Cape  
+27 (0) 41 453 2317

#### Kathu

33 Kalk Street, Industrial Area  
Kathu,  
Northern Cape  
+27 (0) 53 723 2194

#### Margate

Airport Park, Links Road  
Margate Ext 3,  
KwaZulu Natal  
+27 (0) 39 317 1708

#### Mbombela

Erf 379, Rocky Drift  
White River,  
Mbombela  
+27 (0) 13 758 1036

#### Midrand

Poplar Crescent, Lords View  
Industrial Park, Klipfontein  
Chloorkop X66, Gauteng  
+27 (0) 10 601 6313

#### Newcastle

6 Schonland Street  
Riverside Industrial Area  
Newcastle, KwaZulu Natal  
+27 (0) 34 375 7697

#### Polokwane

62 Goud Street, Laboria  
Polokwane Ext 8,  
Limpopo  
+27 (0) 15 293 0450

#### Richards Bay

111 Allumina Allee St,  
Alton, Richards Bay  
KwaZulu Natal  
+27 (0) 35 751 1140

#### Rustenburg

3 Ferro Street, Rustenburg  
North West Province  
+27 (0) 14 538 2540

### Head Office

181 Barbara Road,  
Elandsfontein, Gauteng  
Tel +27 (0) 11 842 4000



Waco Africa / Head Office:  
181 Barbara Road, Elandsfontein, Gauteng  
Tel: +27 (0) 11 842 4000



[www.formscaff.com](http://www.formscaff.com)

